

EP中力

ES15-15ES

ES15-18ES

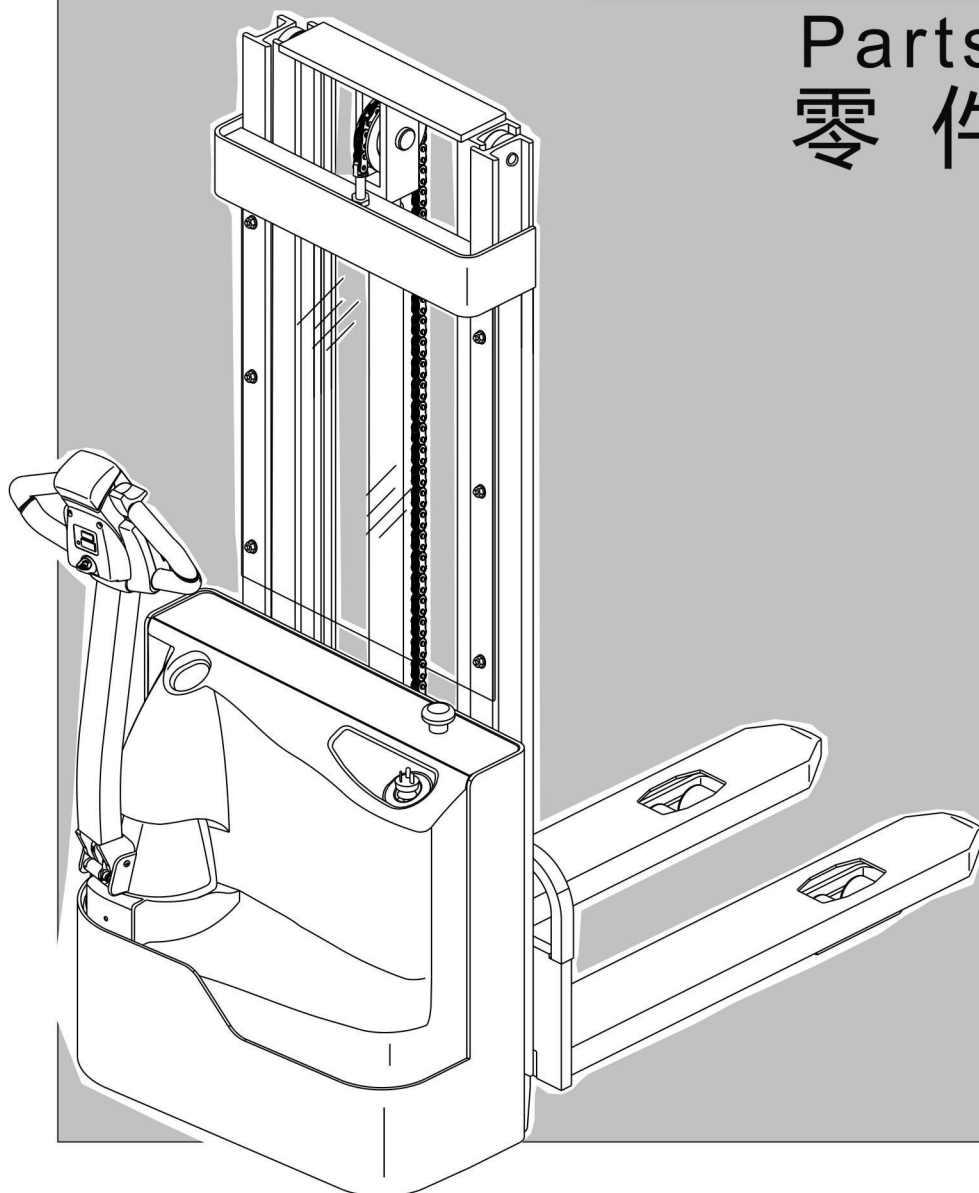
ES15-33DM

Electric Stacker

电动堆高车

Parts Manual

零件目录



CE
CE CERTIFICATE

Part No.508000002909

V1 05/2019

PARTS ORDERING INSTRUCTIONS

HOW TO ORDER

When you order, supply the part number, quantity, model and serial numbers of your machine. Supplying this information will assure prompt, efficient handling of your order.

Since your dealer carries many parts in stock and maintains up-to-date prices on all parts, he will be able to process your order immediately. If, for some reason, the part is not in stock, he will order it from the factory. In either event, he maintains a current file of service manuals, which give all available parts ordering or technical information.

WHERE TO ORDER

Always order parts from the dealer who sold you your truck. If it is necessary for the dealer to order parts from the factory, he is able to get prompt service for you. Parts are shipped in accordance with shipping instructions given on the order.

INSTRUCTIONS FOR RETURNING PARTS

Under NO CIRCUMSTANCES will parts be accepted at the factory for credit without prior approval . We cannot accept responsibility for parts returned without authorization.

If you have some parts which must be returned, contact your dealer. If he believes parts should be returned, he will arrange for authorization to return the parts.

CHANGES

When changes are made to the machine, revised pages for this manual will be issued. These pages must be inserted in your parts manual as soon as they are received. Failure to keep your parts manuals up to date will result in confusion and may cause you to order wrong parts.

EP EQUIPMENT CO.,LTD.

Address: XIAQUAN,DIPU,ANJI,ZHEJIANG,CHINA

Tel:4008802178

Net:www.ep-ep.com

Email:epparts@ep-ep.com

ALL RIGHT RESERVED COPYRIGHT

PM2105 05.19

零件订购说明

如何订购

当您订购的时候，您需要提供堆高车零件的编号，数量，型号和序列号。提供这些信息能够保证您的订购更加的高效。

因为您的经销商有很多零件的存货，而且需要保持所有零件的价格是最新的，所以他会尽快地处理您的订购需求。假如因为某些原因，存货中没有这个零件，那么他会从公司订货。无论怎么样的情况，他手里都会有一份服务手册文件，它能提供所有可用的零件的订购信息或者技术信息。

订购地点

当您需要订购零件时，请到销售给您堆高车的经销商那里订购。如果经销商有必要从公司订购零件，他能为您提供快捷的服务。根据您的订购信息，零件和它对应的操作说明会一起装好。

零件的退还说明

一般情况下，因为信用的关系，退还的零件没有事先的同意，是不会被公司认可的。我们不会对没有经过授权但退还过来的零件负责。

如果您有一些零件一定要退还，请联系您的经销商。若经销商确认零件可以退还，则其会安排授权要退还的零件。

技术修改

当堆高车技术有修改时，这本手册的修正页会重新发行。当您拿到这些修正页时，您一定要立即把它们插入到您的零件手册中。若没有及时的更新您的零件手册，则可能会导致您订购、维护等方面的错误。

浙江中力机械有限公司

地址：浙江省安吉县递铺镇霞泉村中力园区

电话：4008802178

网址：www.ep-ep.com

邮箱：eparts@ep-ep.com

版权归本公司所有

PM2105 05.19

GENERAL INFORMATION

INDEX

This parts manual is arranged for easy identification of parts .The index at the front of the catalog gives location of major groups and assemblies.

PART LIST

The **Index**, describes the item on the Figure you are looking at. The **Part No.** is a numerical description of the item and the part ordering number. The **Part Name** is a description of the part number in alphabetical form. The **No.** is the quantity used on the machine.The **Applied Date** is a description when the part is applicable.The **Remark** is the explanation of the part for a supplement,such as the model,the capability, the characteristic,etc.

HOW TO READ PARTS MANUAL

HELP 1:

	Index	Part No.	Part Name	No.	Applied Date	Remark
	序号	零件编号	零件名称	数量	适用日期	备注
A	18	0000-000667-00	Bearing 61905Z	1		
	19	1115-200004-00	Helical Gear	1		
		1115-200005-00	Helical Gear	1		
	20	0000-000680-00	Bearing 16003Z	1		
B	22	2108-540000-00	Bracket	1		
	23	1115-500005-00-01	Battery	2		65AH / 12V
	23	1115-500005-00-02	Battery	2		85AH / 12V
	24	0000-000378-00	Screw M4×16	2		
C	8	ck11-560003-00	JC100 Switch	1		
	9	01 ck11-520008-00	JC100 Switch Wire Harness	1		Cancelled/取消
		02 ck11-520008-0A	JC100 Switch Wire Harness	1		
	10	0000-000001-00	Screw M6×20	2		

A: The part of Index 19 is a discreteness with two kings of parts.It denotes **Not Sold Separately**.

B: The part of Index 23 is **Optional**.

C: The part of index 9 is improved and upgraded. Please use the **New Part Number** when ordering.

D: The part of Index 7 has an **Applicability**,because it's our policy to constantly improve our products.

The part of Index 11 is same ,but the Part Number is changed.And please use the new Part Number when you order this part.

	Index	Part No.	Part Name	No.	Applied Date	Remark
	序号	零件编号	零件名称	数量	适用日期	备注
D	7	01 2125-410004-00	Cap	1	-071011	
		02 2125-410004-0A	Cap	1	071011-	
	8	0000-000084-00	Ring Wiper 35×43×5-6.5	1		
	9	0000-000370-00	O-ring 40×3.1	1		
	10	2125-410005-00	Ring Back Up 50×45×20	1		
	11	01 0000-000197-00	Rod Packing 40×50×6	1		Old
	02 0000-000512-00	Rod Packing 40×50×6	1		New	

1. Record by time

- 070911 : Ending on July 09, 2011.
- 071011- : Beginning on July 10, 2011.

2. Record by serial number

Index	Part No.	Part Name	No.	Applied Date	Remark
序号	零件编号	零件名称	数量	适用日期	备注
7	01 2125-410004-00	Cap	1	-S2016344	
02	2125-410004-0A	Cap	1	S2016345-	
8	0000-000084-00	Ring Wiper 35×43×5-6.5	1		
9	0000-000370-00	O-ring 40×3.1	1		
10	2125-410005-00	Ring Back Up 50×45×20	1		
11	01 0000-000197-00	Rod Packing 40×50×6	1		Old
02	0000-000512-00	Rod Packing 40×50×6	1		New

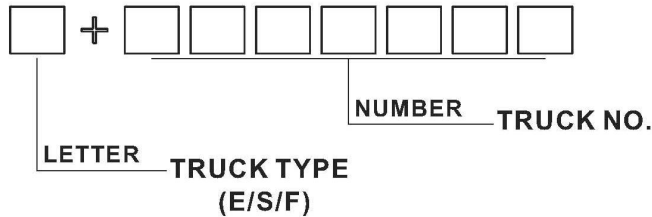
D ⇨

- S2016344 : Ending at S2016344
- S2016345- : Starting at S2016345

There are three types of serial number:

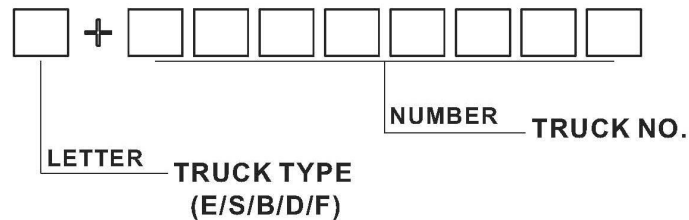
1) 1 (LETTER)+ 7 (NUMBERS)

Applied Date: Up to February 1,2015



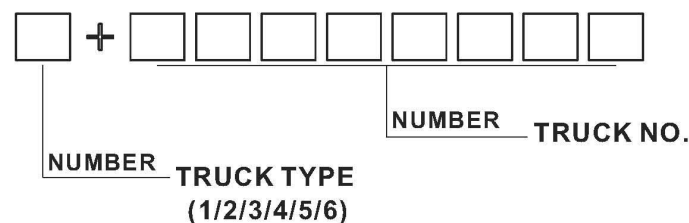
2) 1 (LETTER)+ 8 (NUMBERS)

Applied Date: From February 1,2015 to June 1,2015

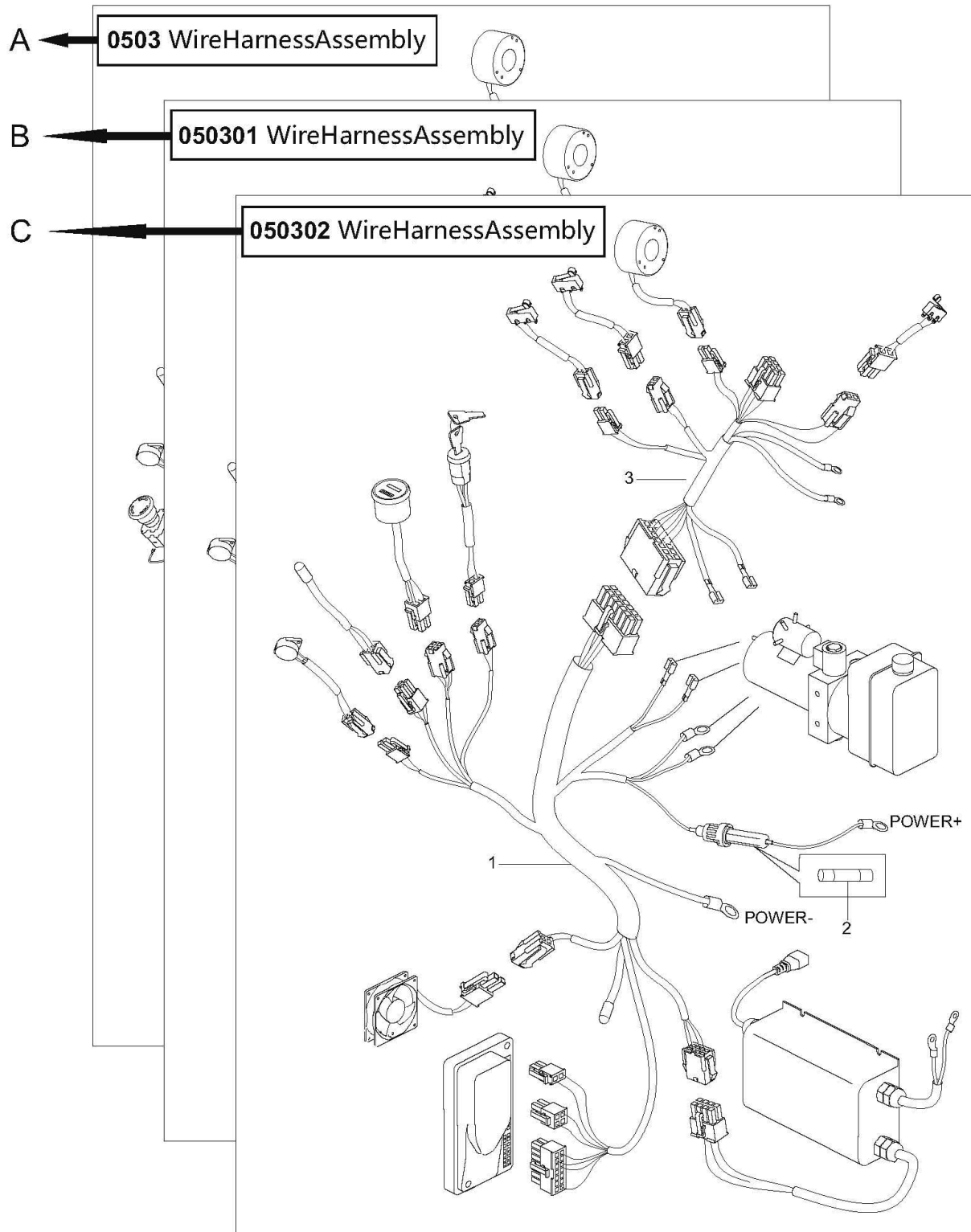


3) 1 (NUMBER)+ 8 (NUMBERS)

Applied Date: From June 1,2015



HELP 2:



A: Section 0503 is the original version.

B: Section 050301 is the version that some parts in the Section 0503 have been changed.

C: Section 050302 is the version that some parts in the Section 050301 have been changed.

When you order, Please locate specific parts information of your truck by the Applied Date of parts in each version.

概要

目录

将零件目录分组成几个易识别的部分，并把主要结构和总成放置在索引目录中。

零件明细表

Index 描述的是在插图上，您想要找的项目。**Part No.**是零件的一系列描述和它的订购号码。**Part Name**是用文字的形式描述零件的号码。**No.**代表的是零件在搬运车上使用的数量。**Applied Date** 表示的是零件适用的时间范围。**Remark** 是用来补充说明零件信息(例如车型、性能和特征等)。

怎么读取零件明目录

帮助 1:

	Index 序号	Part No. 零件编号	Part Name 零件名称	No. 数量	Applied Date 适用日期	Remark 备注
A	18	0000-000667-00	Bearing 61905Z	1		
	19	1115-200004-00	Helical Gear	1		
		1115-200005-00	Helical Gear	1		
	20	0000-000680-00	Bearing 16003Z	1		
B	22	2108-540000-00	Bracket	1		
	23	1115-500005-00-01	Battery	2		65AH / 12V
	23	1115-500005-00-02	Battery	2		85AH / 12V
	24	0000-000378-00	Screw M4×16	2		
C	8	ck11-560003-00	JC100 Switch	1		
	9	01 ck11-520008-00	JC100 Switch Wire Harness	1		Cancelled/取消
	02	ck11-520008-0A	JC100 Switch Wire Harness	1		
	10	0000-000001-00	Screw M6×20	2		

A: 序号 19 表示的是一个由两种零件组成的组件，不以单件形式出售。

B: 序号 23 表示该零件有几个品种可供您的选择。

C: 序号 9 表示该零件进行了改进和升级，订购时请使用新的零件编码。

D: 序号 7 表示该零件有一个适用的时间范围。这是因为我们在不断地进行产品的升级。

序号 11 表示的都是同一种零件，只是零件编码有所变更。因此，当您订购这类零件时，请您使用新的零件编码。

	Index 序号	Part No. 零件编号	Part Name 零件名称	No. 数量	Applied Date 适用日期	Remark 备注
D	7	01 2125-410004-00	Cap	1	-071011	
	02	2125-410004-0A	Cap	1	071011-	
	8	0000-000084-00	Ring Wiper 35×43×5-6.5	1		
	9	0000-000370-00	O-ring 40×3.1	1		
	10	2125-410005-00	Ring Back Up 50×45×20	1		
	11	01 0000-000197-00	Rod Packing 40×50×6	1		Old
02	0000-000512-00	Rod Packing 40×50×6	1		New	

1. 用时间记录

- 070911 : 截止到 2011 年 7 月 09 日

071011- : 起始于 2011 年 7 月 10 日

2. 用序列号记录

Index 序号	Part No. 零件编号	Part Name 零件名称	No. 数量	Applied Date 适用日期	Remark 备注
7	01 2125-410004-00	Cap	1	-S2016344	
02	2125-410004-0A	Cap	1	S2016345-	
8	0000-000084-00	Ring Wiper 35×43×5-6.5	1		
9	0000-000370-00	O-ring 40×3.1	1		
10	2125-410005-00	Ring Back Up 50×45×20	1		
11	01 0000-000197-00	Rod Packing 40×50×6	1		Old
02	0000-000512-00	Rod Packing 40×50×6	1		New

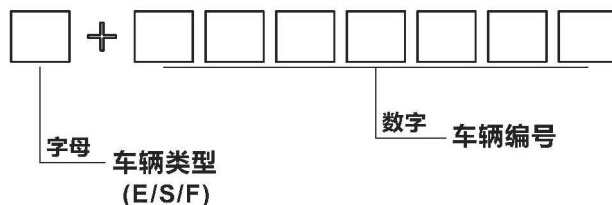
-S2016344 : 截止序列号 S2016344

S2016345- : 起始序列号 S2016345

有三种序列号形式:

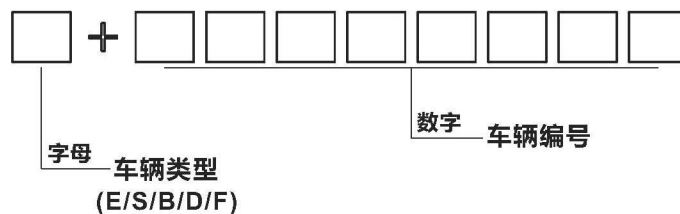
1) 1 (字母) + 7 (数字)

适用时间: 截止到 2015 年 2 月 1 日



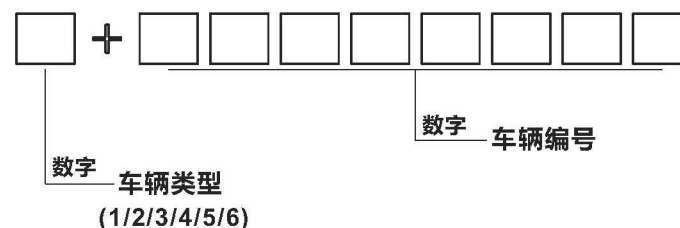
2) 1 (字母) + 8 (数字)

适用时间: 2015 年 2 月 1 日至 2015 年 6 月 1 日

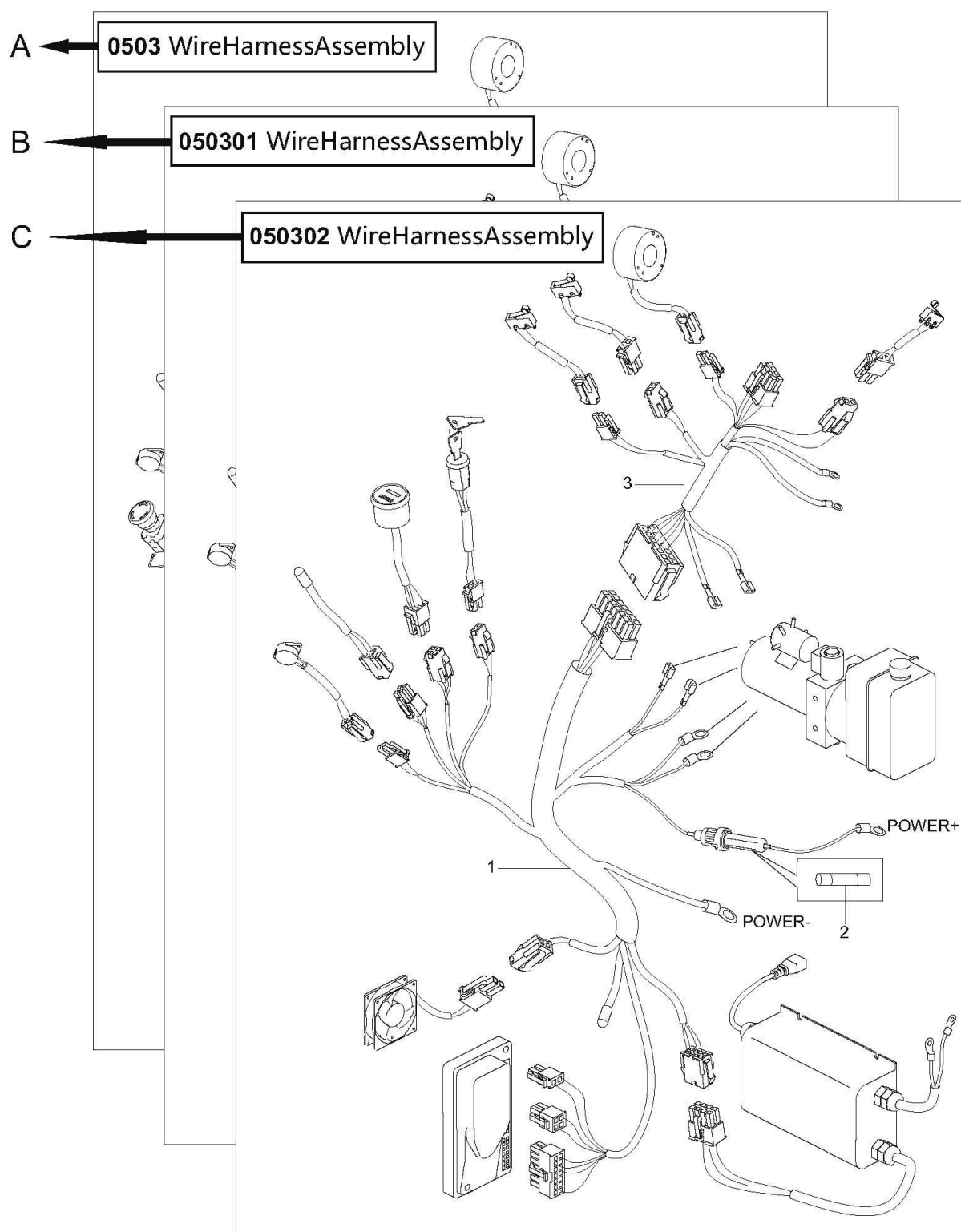


3) 1 (数字) + 8 (数字)

适用时间: 2015 年 6 月 1 日至今



帮助 2:



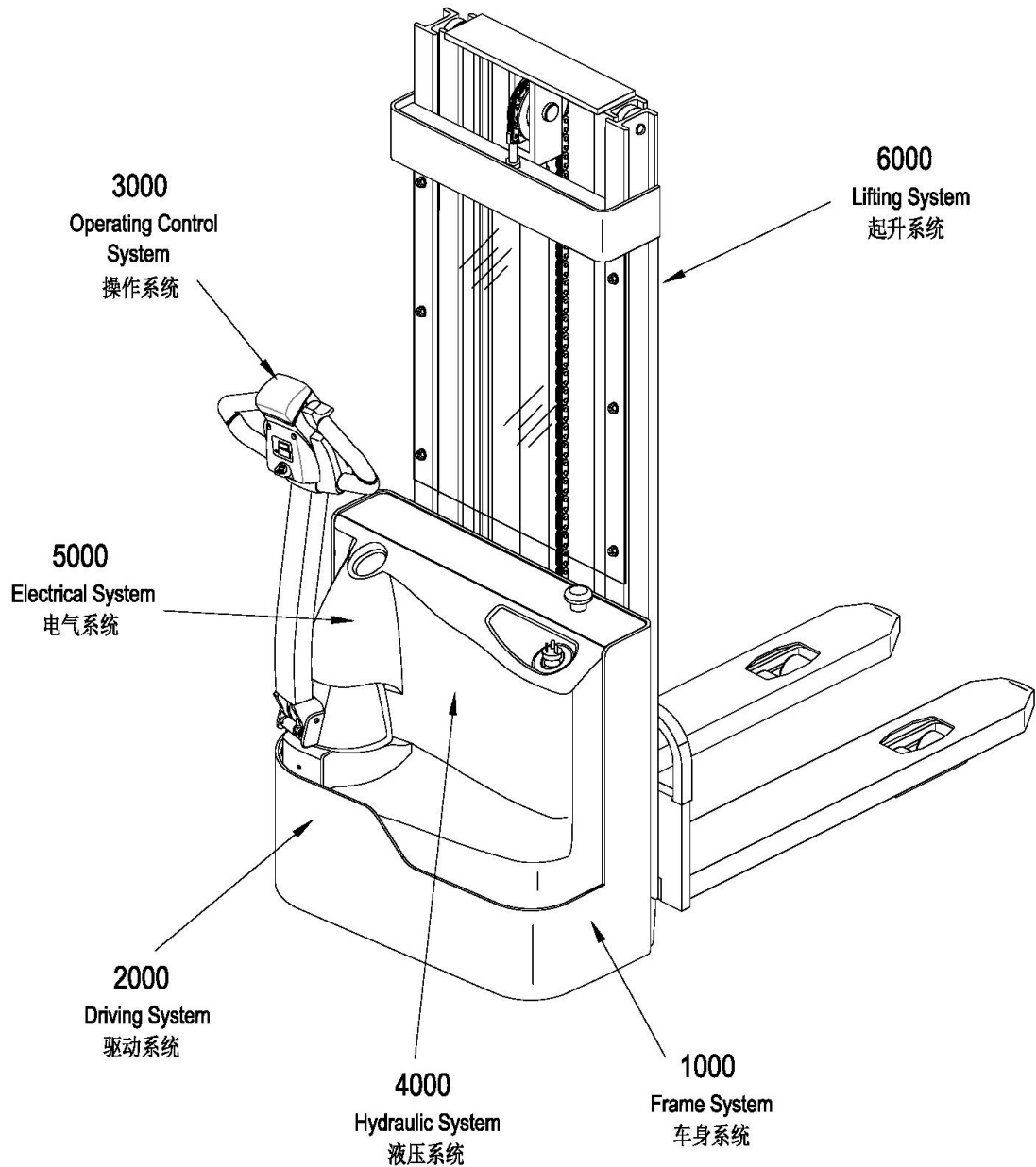
A: 章节 0503 表示原始版本;

B: 章节 050301 表示在原始版本 (章节 0503) 上零件有所变更;

C: 章节 050302 表示在变更版本 (章节 050301) 上零件有所变更。

当您订购零件时, 请根据每个版本中零件的适用时间来判断您所选购车型的零件信息。

Major Assemblies



WARNING: Note that illustrations of assemblies and components may not necessarily conform to the exact installation as they appear on your truck. But this Manual can help you locate specific parts information of your truck.

注意: 表达在零件目录上的总成和结构内容可能不会完全地出现在您的车型上，但是您可以在零件目录中查询到您所选购车型的零件信息。

Index 目录

1000 Frame System 车身系统	1
0101Frame System 车架系统.....	3
0102Frame System (Straddle) 车架系统(宽腿).....	5
0103 Cover Assembly 外罩总成.....	7
0104 Caster Assembly 万向轮总成 I.....	9
0105 Caster Assembly II 万向轮总成 II.....	15
2000 Driving System 驱动系统	16
0201 Driving Assembly 驱动总成.....	18
0202 Gear Case Assembly 减速箱总成.....	20
020201 Gear Case Assembly 减速箱总成.....	22
3000 Operating Control System 操作系统	23
0301 Operating Control Assembly 操作总成.....	25
0302 Control Pod Assembly 操作手柄头总成.....	27
030201 Control Pod Assembly 操作手柄头总成.....	29
0303 Upper Cover Assembly 上盖总成.....	31
030301 Upper Cover Assembly 上盖总成.....	33
0304 Button Reverser Assembly 紧急反向开关总成.....	35
4000 Hydraulic System 液压系统	36
0401 Hydraulic System 液压系统.....	38
0402 Hydraulic Pump Assembly 液压站总成.....	40
5000 Electric System 电气系统	41
0501 Electric Assembly 电气总成.....	43
0502 Control Board Assembly Assembly 电器板总成.....	46
0503 Wiring Harness Assembly 线束总成.....	48
0504 Cable Assembly 电缆总成.....	52
6000 Lifting System 起升系统	53
0601 Duplex Mast Lifting System 两级门架起升系统.....	55
0602 Lifting Cylinder 起升油缸.....	58
0603 Fork Frame 货叉架.....	60
0604 Fork Frame Assembly(Straddle) 货叉架总成(宽腿).....	62
0605 Duplex Mast Chain Assembly 两级门架链条总成.....	64
060501 Duplex Mast Chain Assembly 两级门架链条总成.....	66
0606 Windshield Assembly 安全挡板总成.....	69
060601 Windshield Assembly 安全挡板总成.....	71
060602 Windshield Assembly 安全挡板总成.....	73

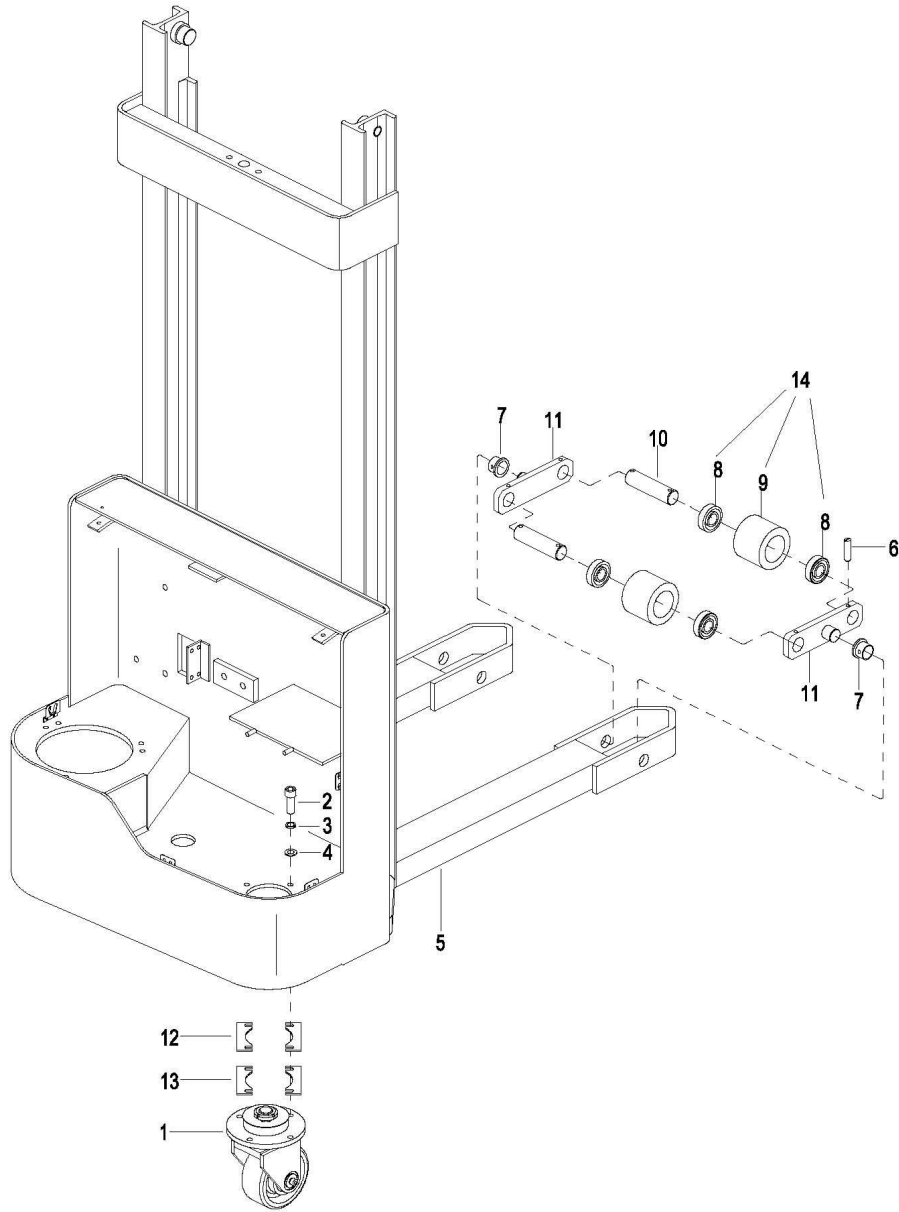
1000

Frame System

车身系统

0101 Frame System

车架系统



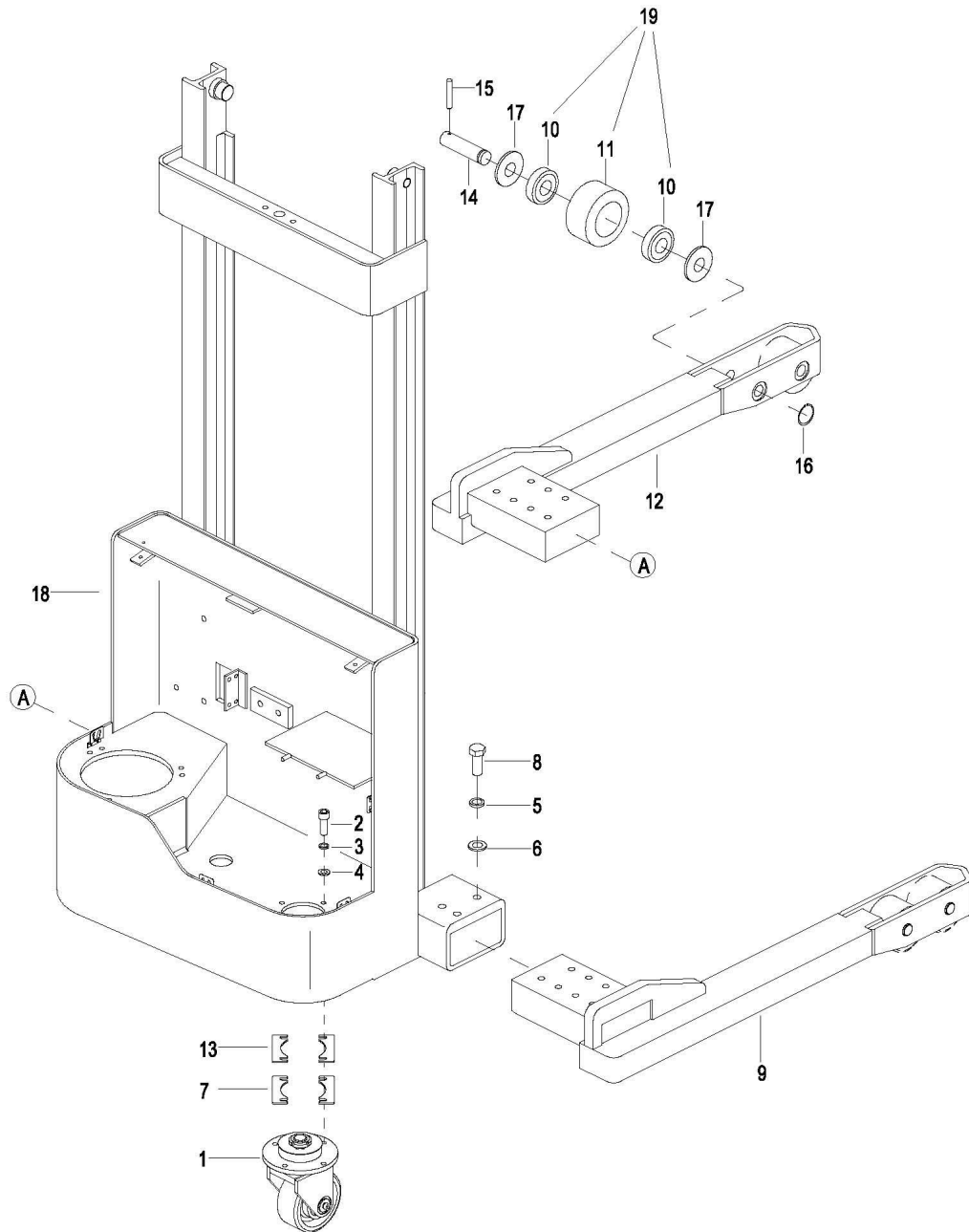
0101Frame System

车架系统

Index	Part No.	Part Name	No.	Applied Date	Remark
序号	零件编号	零件名称	数量	适用时间	备注
1	1220-140000-00	Caster Assembly I	1		See 0104, Superseded by 1216-180000-10
1	1216-180000-10	Caster Assembly I	1		See 010401,BGD-20-029104
2	0000-000322-00	Screw M8×25	4		
3	0000-000159-00	Lockwasher ø8	4		
4	0000-000194-00	Flatwasher ø8	4		
5	01 2105-100000-00-01	Frame	1	-426131408	For 1.5t,H=2500mm
	01 2105-100000-00-02	Frame	1	-426131408	For 1.5t,H=2700mm
	01 2105-100000-00-03	Frame	1	-426131408	For 1.5t,H=3000mm
	01 2105-100000-00-04	Frame	1	-426131408	For 1.5t,H=3300mm
	02 2105-100000-0A-01	Frame	1	426131409-4 311304004	EP20190301,For 1.5t,H=2500mm
	02 2105-100000-0A-02	Frame	1	426131409-4 311304004	EP20190301,For 1.5t,H=2700mm
	02 2105-100000-0A-03	Frame	1	426131409-4 311304004	EP20190301,For 1.5t,H=3000mm
	02 2105-100000-0A-04	Frame	1	426131409-4 311304004	EP20190301,For 1.5t,H=3300mm
	03 2105-100000-0D-01	Frame	1	4311304005-	BGD-21-005477,For 1.5t,H=2500mm
	03 2105-100000-0D-02	Frame	1	4311304005-	BGD-21-005477,For 1.5t,H=2700mm
	03 2105-100000-0D-03	Frame	1	4311304005-	BGD-21-005477,For 1.5t,H=3000mm
	03 2105-100000-0D-04	Frame	1	4311304005-	BGD-21-005477,For 1.5t,H=3300mm
5	2105-100000-BS-01	Frame, LH: 2500mm	1		For 1.8t 570mm
5	2105-100000-BS-02	Frame, LH: 2700mm	1		For 1.8t 570mm
5	2105-100000-BS-03	Frame, LH: 3000mm	1		For 1.8t 570mm
5	2105-100000-BS-04	Frame, LH: 3300mm	1		For 1.8t 570mm
5	2105-110000-8A-01	Frame, LH: 2500mm	1		For 1.8t 685mm
5	2105-110000-8A-02	Frame, LH: 2700mm	1		For 1.8t 685mm
5	2105-110000-8A-03	Frame, LH: 3000mm	1		For 1.8t 685mm
5	2105-110000-8A-04	Frame, LH: 3300mm	1		For 1.8t 685mm
6	0000-001457-00	Round Pin ø4×35	8		
7	0000-000778-00	Bushing 1815F	4		
8	0000-000020-00	Bearing 6204	8		
9	1115-133002-0B	Loading Wheel	4		
10	1115-130007-0A	Shaft	4		
11	1115-130006-0A	Bracket	4		Superseded by 2108-120001-00
11	2108-120001-00	Bracket	4		EP20210809
12	2108-100001-10-01	Washer	Req.		THK=1mm
13	2108-100001-10-03	Washer	Req.		THK=3mm
14	1115-13302X-0B	PU wheel unit	4		With bearing

0102 Frame System (Straddle)

车架系统 (宽腿)



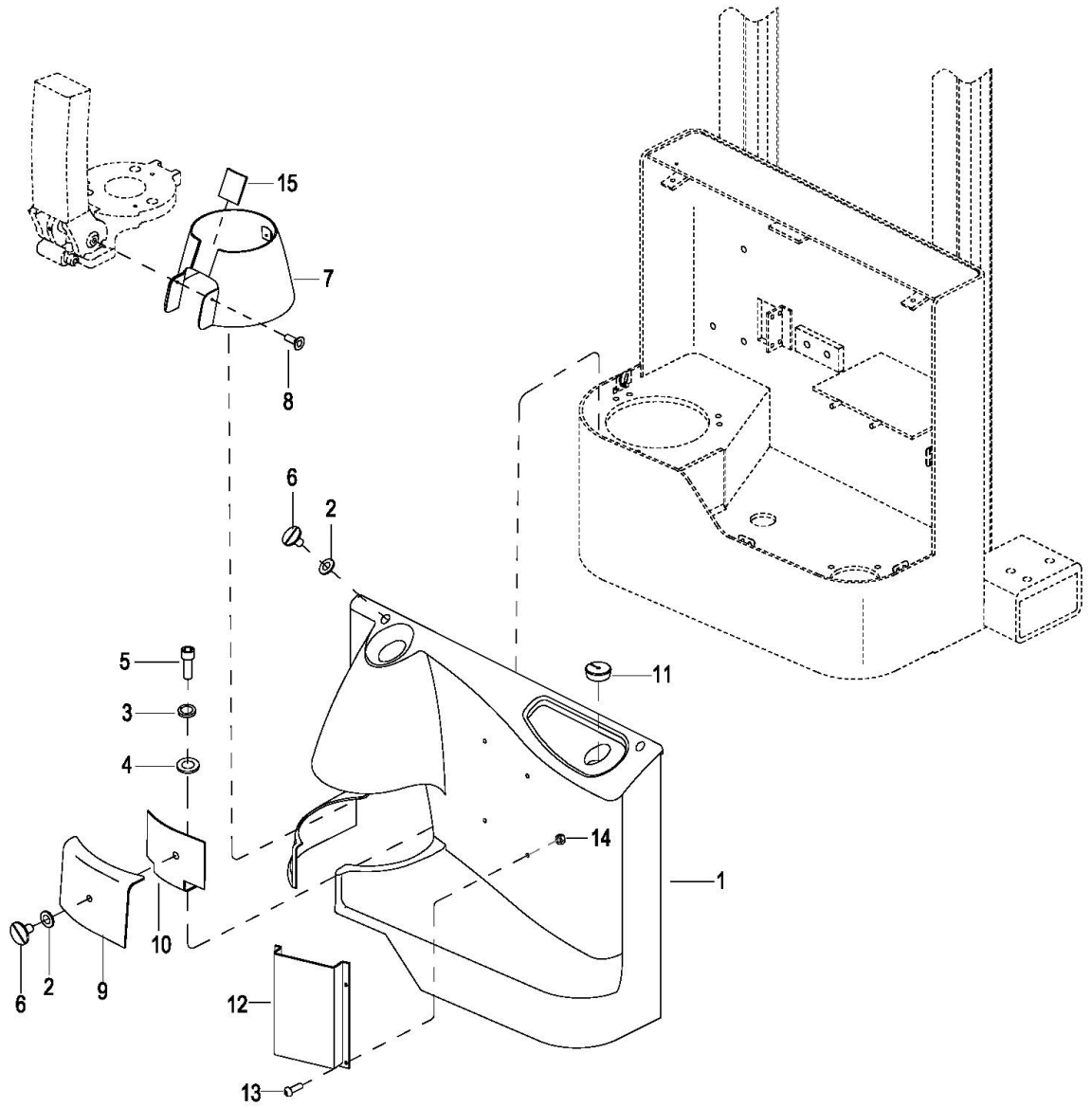
0102Frame System (Straddle)

车架系统 (宽腿)

Index	Part No.	Part Name	No.	Applied Date	Remark
序号	零件编号	零件名称	数量	适用时间	备注
1	2108-140000-1A	Caster Assembly II See 0105	1		
		万向轮总成 II 见图 0105			
2	0000-000322-00	Screw M8×25	4		
3	0000-000159-00	Lockwasher ø8	4		
4	0000-000194-00	Flatwasher ø8	4		
5	0000-000191-00	Lockwasher ø16	6		
6	0000-000220-00	Flatwasher ø16	6		
7	2108-100001-10-01	Washer	Req.		THK=1mm
8	0000-000963-00	Bolt M16×60	6		
9	2105-150000-70	End Frame R	1		
10	0000-000100-00	Bearing 6205-2Z	8		
11	2130-140001-00	Load Wheel	4		
12	2105-140000-70	End Frame L	1		
13	2108-100001-10-03	Washer	Req.		THK=3mm
14	2130-140002-0A	Shaft	4		
15	0000-000654-00	Roll Pin ø4×45	4		
16	0000-000294-00	Retaining Ring ø25	4		
17	2130-140003-00	Washer	8		
18	01 2105-100000-70-01	Frame	1	-426131408	H=2500mm
	01 2105-100000-70-02	Frame	1	-426131408	H=2700mm
	01 2105-100000-70-03	Frame	1	-426131408	H=3000mm
	01 2105-100000-70-04	Frame	1	-426131408	H=3300mm
	02 2105-100000-7A-01	Frame	1	426131409-43 11304004	H=2500mm,EP20190301
	02 2105-100000-7A-02	Frame	1	426131409-43 11304004	H=2700mm,EP20190301
	02 2105-100000-7A-03	Frame	1	426131409-43 11304004	H=3000mm,EP20190301
	02 2105-100000-7A-04	Frame	1	426131409-43 11304004	H=3300mm,EP20190301
	03 2105-100000-7C-01	Frame	1	4311304005-	H=2500mm,BGD-21-005477
	03 2105-100000-7C-02	Frame	1	4311304005-	H=2700mm,BGD-21-005477
	03 2105-100000-7C-03	Frame	1	4311304005-	H=3000mm,BGD-21-005477
	03 2105-100000-7C-04	Frame	1	4311304005-	H=3300mm,BGD-21-005477
19	2130-14001X-00	PU wheel unit			With bearing

0103 Cover Assembly

外罩总成



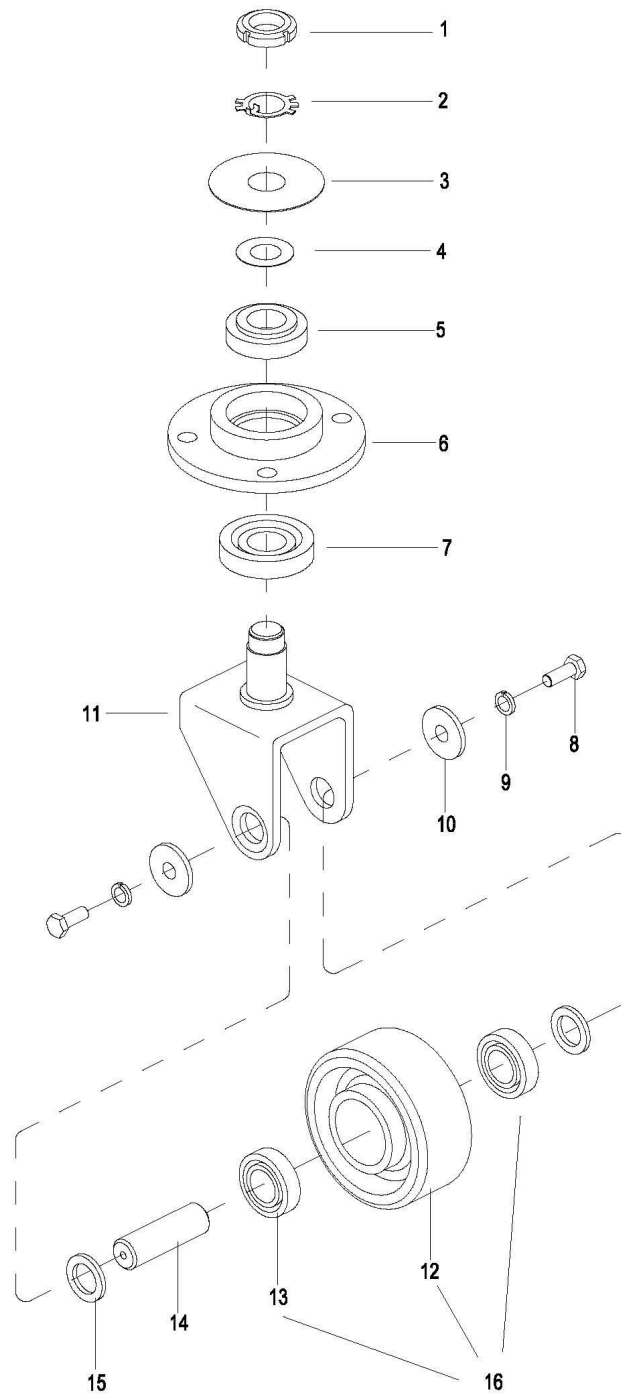
0103 Cover Assembly

外罩总成

Index 序号	Part No. 零件编号	Part Name 零件名称		No. 数量	Applied Date 适用时间	Remark 备注
			上罩			Superseded by
1	2105-100001-00	Cover		1		2105-100001-0A
1	2105-100001-0A	Cover	上罩	1		BGD-22-002579
			上罩			EP20190418,For
1	2105-100001-00-BJ	Cover		1	4281205402-	BJ,Superseded by
1	2105-100001-0A-BJ	Cover	上罩	1	4281205402-	2105-100001-0A-BJ
1	2105AU-130001-00	Cover	上罩	1	426111164-	BGD-22-002579,For BJ
			上罩			For manual holder
1	2105AU-130001-00-BJ	Cover		1	4281205402-	EP20190418 For BJ, For
						manual holder
2	2214-150003-00	Washer ø6	垫片	3		
3	0000-000056-00	Lockwasher ø6	弹垫	1		
4	0000-000123-00	Flatwasher ø6	平垫	1		
5	0000-000077-00	Screw M6×12	螺钉	1		
6	1120-150004-00	Screw M6×25	螺钉	3		
7	1120-150002-00	Rotation Cover	旋转罩	1		
8	0000-000126-00	Screw M6×16	螺钉	2		
9	2112-150001-00	Small Cover	小外罩	1		
10	2112-150002-00	Cover Bracket	小罩固定板	1		
11	1115-120002-00	Charger Cap	充电线盖	1		
12	1146-151002-30	Manual Holder	资料盒	1	426111164-	For manual holder
13	0000-000119-00	Screw M5×12	螺钉	4	426111164-	For manual holder
14	0000-000546-00	Nut M5	螺母	4	426111164-	For manual holder
15	1120-150005-00	Interting piece	插片	1		

0104 Caster Assembly

万向轮总成 I



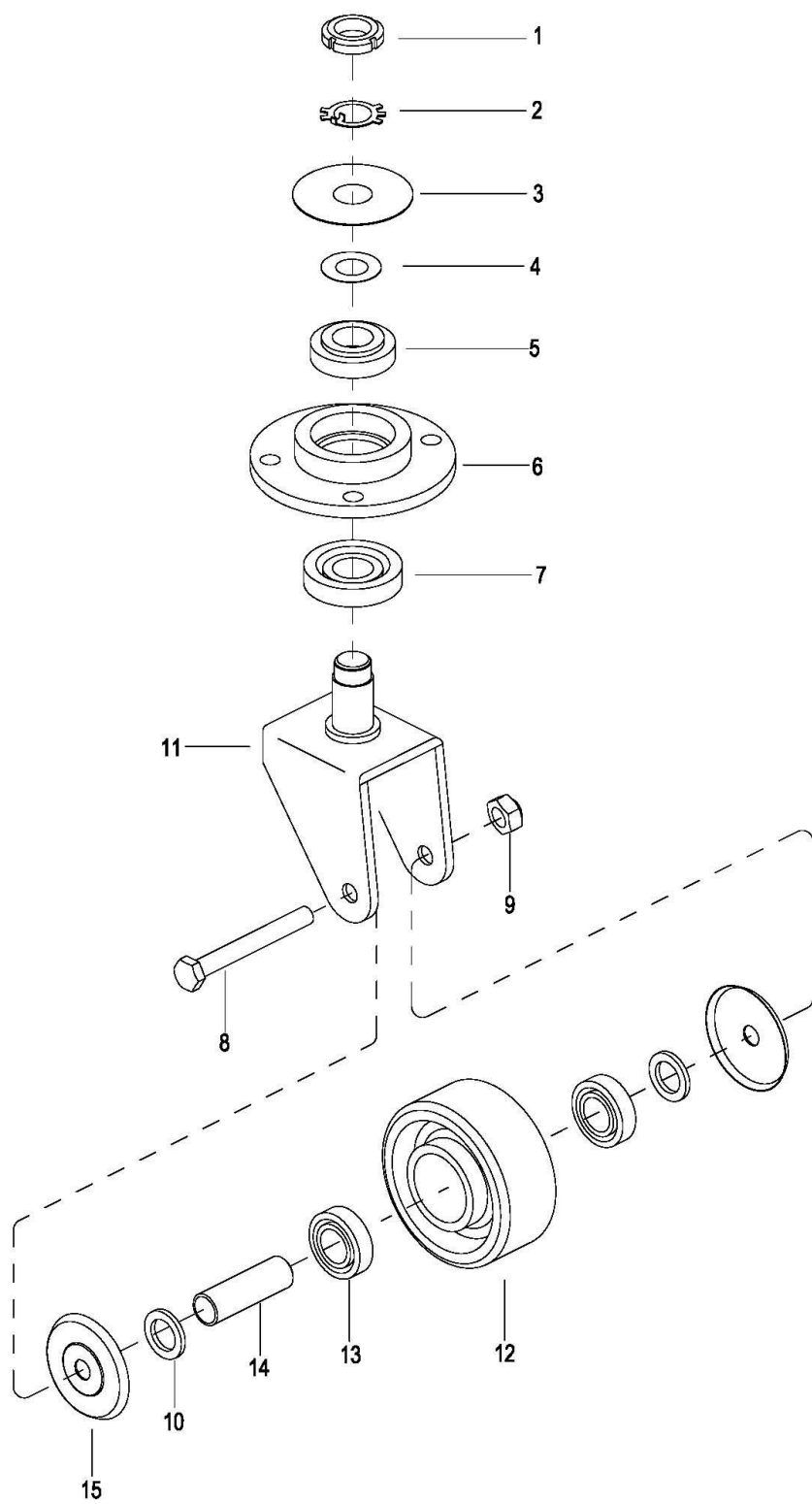
0104 Caster Assembly

万向轮总成 I

Index	Part No.	Part Name		No.	Applied Date	Remark
序号	零件编号	零件名称		数量	适用时间	备注
1	0000-000093-00	Nut M27×1.5	螺母	1	-4301610647	
2	0000-000094-00	Lockwasher ø27	弹垫	1	-4301610647	
3	1220-140001-00	Ring	挡片	1	-4301610647	
4	1220-140005-00	Washer	垫片	1	-4301610647	
5	0000-000420-00	Bearing 6206-2RZ	轴承	1	-4301610647	
6	1220-140002-00	Bearing Block	轴承座	1	-4301610647	
7	0000-000421-00	Bearing 6306-2RZ	轴承	1	-4301610647	
8	0000-000242-00	Bolt M8×16	螺栓	2	-4301610647	
9	0000-000159-00	Lockwasher ø8	弹垫	2	-4301610647	
10	1220-140004-00	Washer	垫圈	2	-4301610647	
11	1220-141000-00	Wheel Bracket	轮支架	1	-4301610647	
12	01 1220-142001-00		PU 轮			Superseded by
		Loading Wheel		1		1220-142001-00-01
	02 1220-142001-00-01	Loading Wheel	PU 轮	1	-4301610647	EP20200918
13	0000-000100-00	Bearing 6205	轴承	2	-4301610647	
14	1220-142002-00	Shaft	轮轴销	1	-4301610647	
15	1220-140003-00	Washer	调整垫圈	Req.	-4301610647	
16	1220-14201X-00-01	PU wheel unit	PU 轮组	1	-4301610647	With bearing

010401 Caster Assembly I

万向轮总成 I



010401 Caster Assembly I

万向轮总成 I

Index 序号	Part No. 零件编号	Part Name 零件名称		No. 数量	Applied Date 适用时间	Remark 备注
1	0000-000093-00	Nut M27×1.5	螺母	1	4301610648-4321 105198	BGD-20-029104
2	0000-000094-00	Lockwasher ø27	弹垫	1	4301610648-4321 105198	BGD-20-029104
3	1220-140001-00	Washer	挡片	1	4301610648-	BGD-20-029104
4	1220-140005-00-01	Washer	垫片	Req.	4301610648-4321 105198	1mm,BGD-20-029
4	1220-140005-00-02	Washer	垫片	Req.	4301610648-4321 105198	3mm,BGD-20-029 104
5	309001000005	Bearing 6206-2Z	轴承	1	4301610648-	BGD-20-029104
6	1220-140002-00	Caster Support	轴承座	1	4301610648-	BGD-20-029104
7	309001000006	Bearing 6306-2Z	轴承	1	4301610648-	BGD-20-029104
8	301000000087	Screw M16×100	螺栓	1	4301610648-	BGD-20-029104
9	0000-001261-00	Nut M16	锁紧螺母	1	4301610648-	BGD-20-029104
10	1220-140003-00	Washer	垫圈	2	4301610648-	BGD-20-029104
11	1216-181000-00	Wheel Bracket	轮支架	1	4301610648-4321 105198	BGD-20-029104
12	1220-142001-00-01	Balance Wheel	PU 万向轮	1	4301610648-	BGD-20-029104
13	309001000007	Bearing 6205-2RS-C3	轴承	2	4301610648-	BGD-20-029104
14	1216-182002-00	Shaft	轮轴销	1	4301610648-	BGD-20-029104
15	1216-182003-00	Cover	防尘盖	2	4301610648-	BGD-20-029104

010402 Caster Assembly I
万向轮总成 I

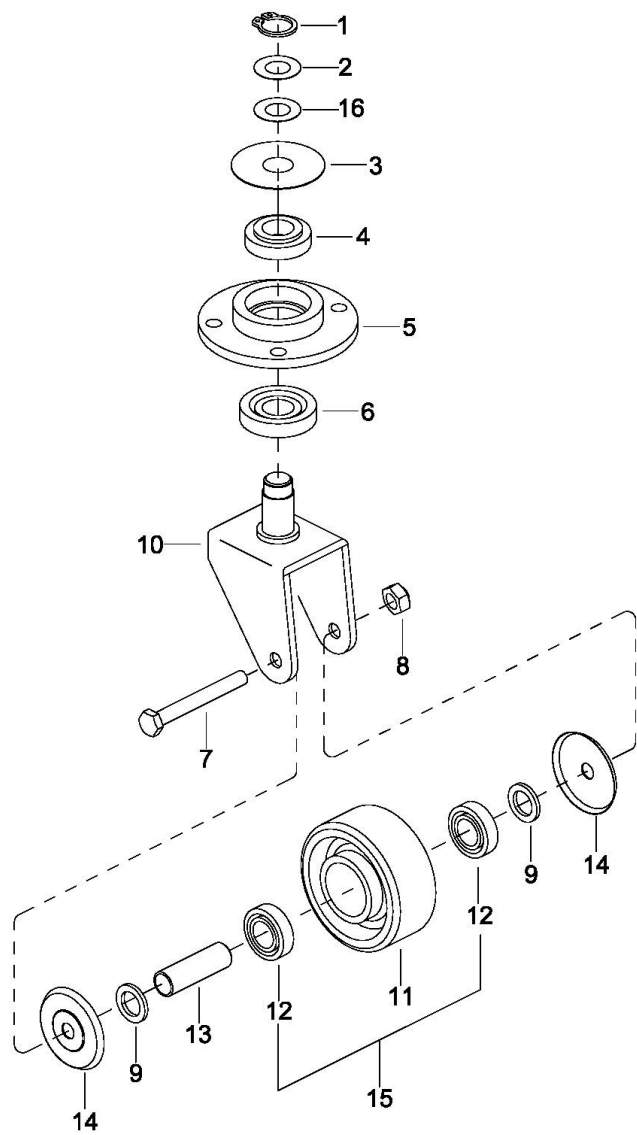


fig1230000900

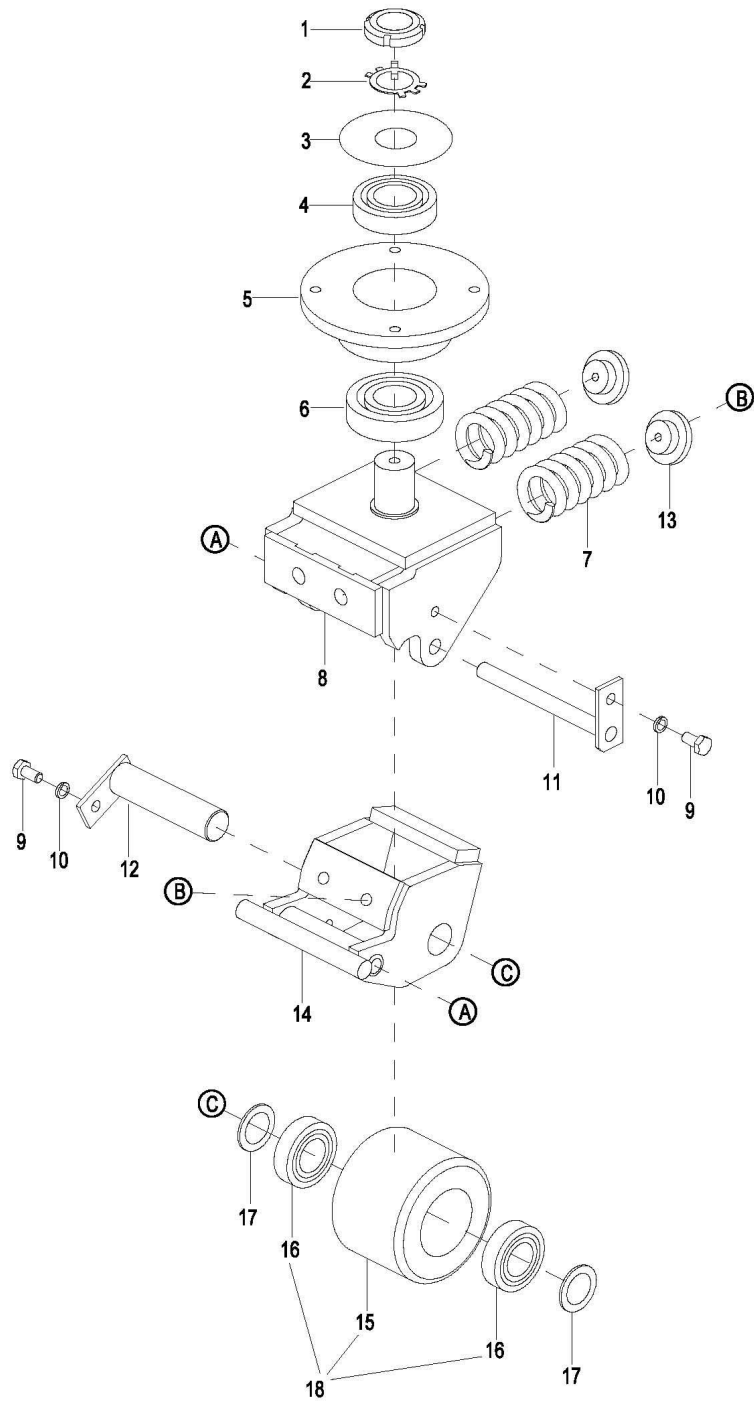
010402 Caster Assembly I

万向轮总成 I

Index 序号	Part No. 零件编号	Part Name 零件名称		No. 数量	Applied Date 适用时间	Remark 备注
1	305001000007	Circlips for shaft ø30	轴用弹性挡圈 A 型	1	4321105199-	BGD-22-005464 3mm,Req,BGD-22
2	1220-140004-30	Washer	垫片	1	4321105199-	-005464
3	1220-140001-00	Washer	挡片	1		
4	309001000005	Bearing 6206-2Z	轴承	1		
4	1220-140002-00	Caster Support	轴承座	1		
5	309001000006	Bearing 6306-2Z	轴承	1		
6	301001000063	Bolt M16×100	螺栓	1		
7	303022000002	Nut M16	锁紧螺母	1		
8	1220-140003-00	Washer	垫圈	2		
9	1216-181000-0A	Wheel Bracket	轮支架	1	4321105199-	BGD-22-005464
10	1220-142001-00-01	Balance Wheel	PU 万向轮	1		
11	309001000007	Bearing 6205-2RS-C3	轴承	2		
12	1216-182002-00	Shaft	轮轴销	1		
13	1216-182003-00	Cover	防尘盖	2		
14	1216-182000-10	PU Wheel unit	PU 轮组件	1		
15	1216-180001-30	Washer	垫片	1	4321105199-	1mm,Req,BGD-22 -005464

0105 Caster Assembly

万向轮总成 II



0105 Caster Assembly II

万向轮总成 II

Index	Part No.	Part Name		No.	Applied Date	Remark
序号	零件编号	零件名称		数量	适用日期	备注
1	0000-000093-00	Nut M27×1.5	圆螺母	1		
2	0000-000094-00	Washer ø27	止动垫圈	1		
3	1220-140001-00	Snap Ring	挡片	1		
4	0000-000420-00	Bearing 6206-2RZ	轴承	1		
5	2140-140002-00	Bearing Block	轴承座	1		
6	0000-000421-00	Bearing 6306-2RZ	轴承	1		
7	2140-140004-00	Spring	压簧	2		
8	2140-141000-00	Yoke	旋转座	1		
9	0000-000242-00	Bolt M8×16	螺栓	2		
10	0000-000159-00	Lockwasher ø8	弹垫	2		
11	2140-142000-00	Hinge Pin	定位销	1		
12	2140-145000-00	Shaft	轮轴	1		
13	2140-140003-00	Shaft	弹簧固定轴	2		
14	2140-143000-00	Yoke	轮支架	1		
15	2125-101001-00	PU Wheel	承载轮	1		
16	0000-000424-00	Bearing 6205-2Z	轴承	2		
17	0000-000249-00	Flatwasher ø24	平垫	2		
18	2125-10101X-00	PU wheel unit	PU 轮组	1		With bearing

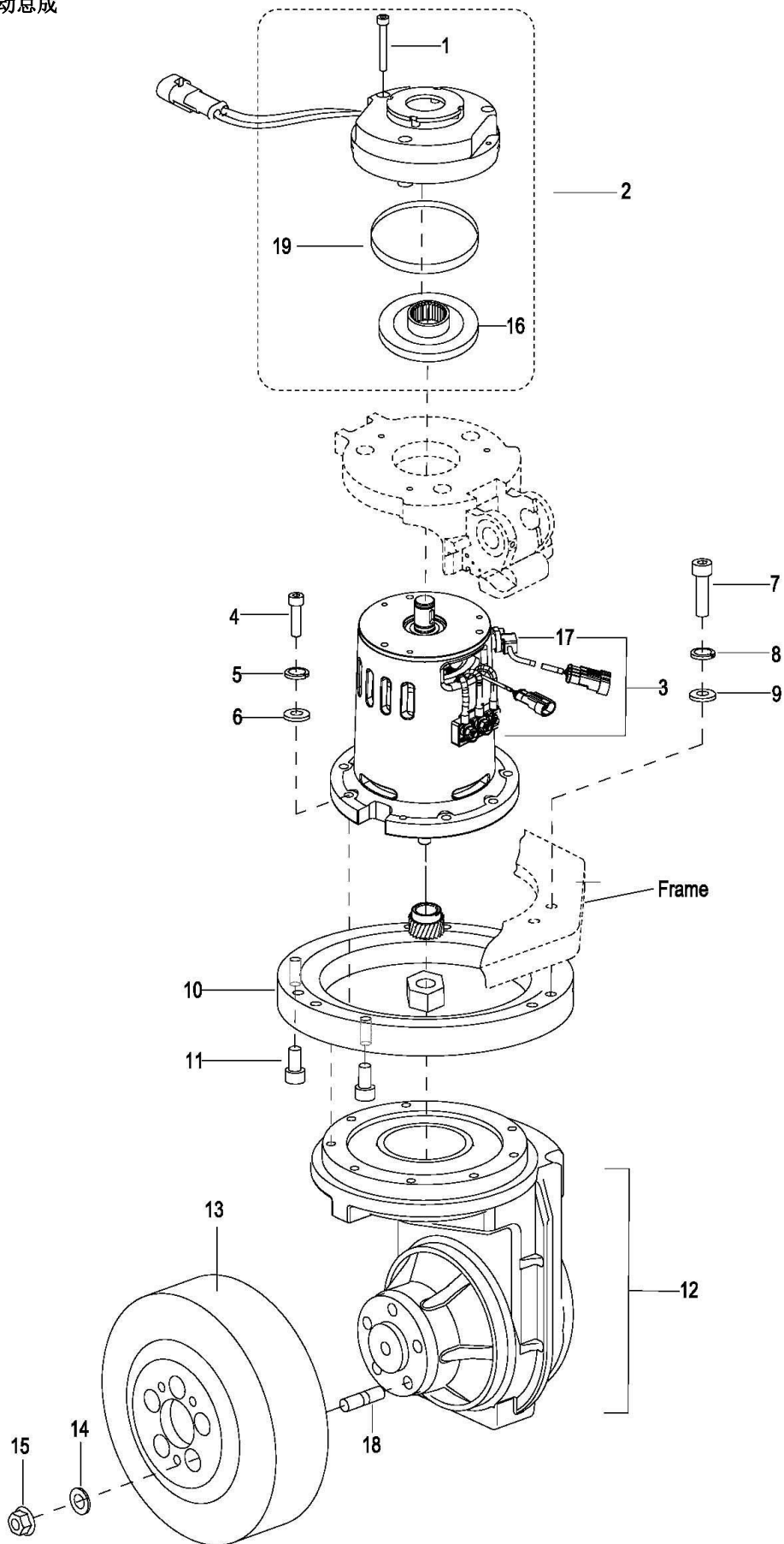
2000

Driving System

驱动系统

0201 Driving Assembly

驱动总成



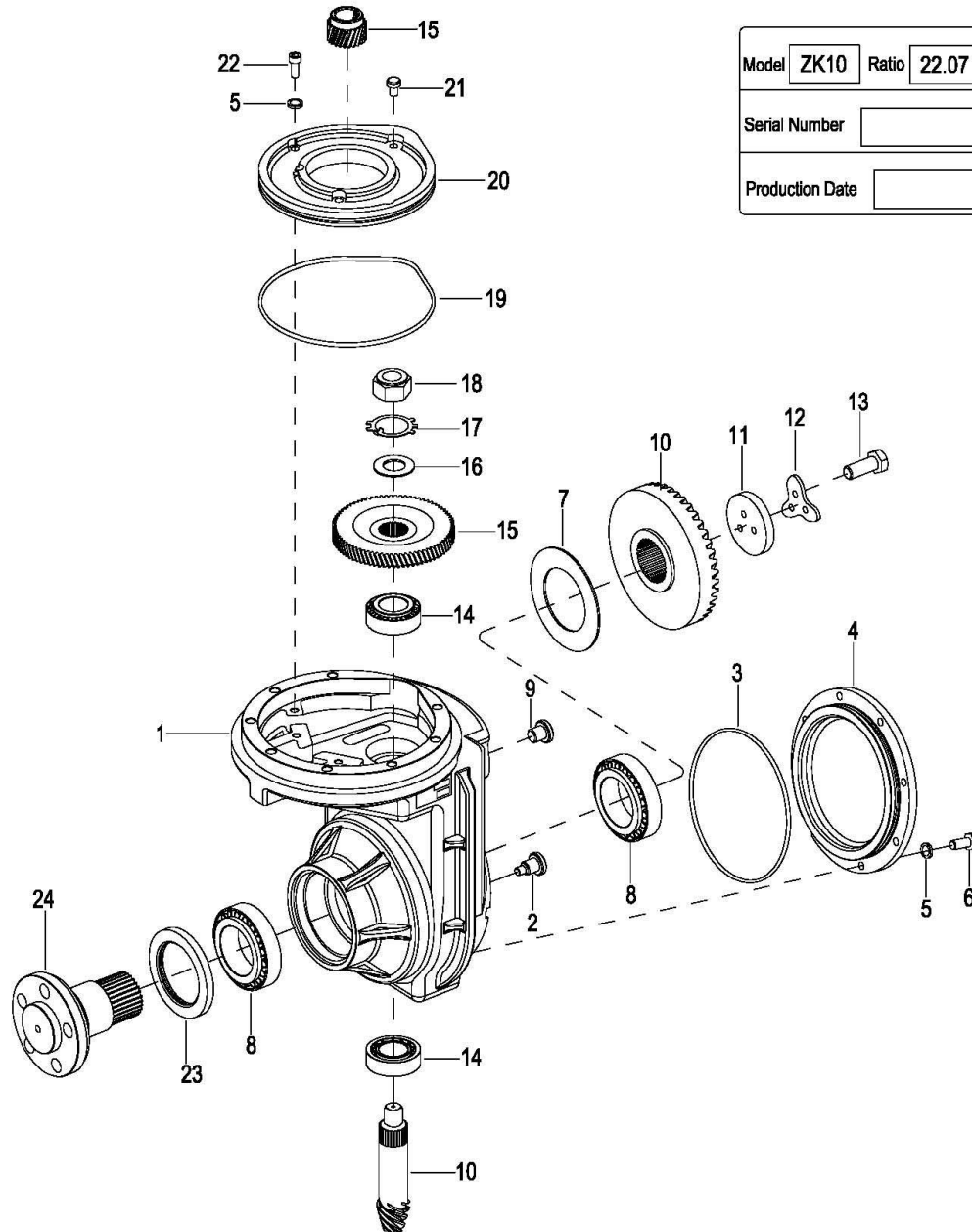
0201 Driving Assembly

驱动总成

Index	Part No.	Part Name	No.	Applied Date	Remark
序号	零件编号	零件名称	数量	适用时间	备注
1	0000-000027-00	Screw M6×55	3		
2	01 2125-210000-00	Brake Assembly	1		Superseded by
	02 1120-210000-10	Brake Assembly	1		1120-210000-10
3	01 2121-220000-00	Motor Assembly	1	-4311304004	EP20190904
	02 ZK12-220000-00	Motor Assembly	1	4311304005-	BGD-21-005477
4	0000-000154-00	Screw M8×35	8		
5	0000-000159-00	Lockwasher ø8	8		
6	0000-000176-00	Flatwasher ø8	8		
7	0000-000155-00	Screw M10×40	6		
8	0000-000063-00	Lockwasher ø10	6		
9	0000-000007-00	Flatwasher ø10	6		
10	1120-230000-00	Bearing	1		
11	0000-000070-00	Screw M10×25	2		
12	01 1120-240000-30	Gear Case Assembly See 0202	1	-427143297	ZK10
	02 ZK12-240000-00	Gear Case Assembly See 020201	1	427143298-	ZK12
13	1120-200001-00	Driving Wheel,PU	1		
13	1120-200001-10	Driving Wheel,Rubber	1		
13	1120-200001-20	Driving Wheel,PU Striped	1		
14	01 0000-000025-00	Lockwasher ø12	5	-427143297	ZK10
	02 ZK12-240018-00	Lockwasher ø12	5	427143298-	ZK12
15	01 0000-000157-00	Nut M12	5	-427143297	ZK10
	02 0000-001131-10	Nut M12	5	427143298-	ZK12
16	2125-210002-00	Brake lining	1		
17	2121-220001-00	Encoder	1	-4311304004	
17	ZK12-22000X-01	Encoder	1	4311304005-	BGD-21-005477
18	01 1120-240014-30	Studs	5	-427143297	ZK10
	02 ZK12-240003-00	Studs	5	427143298-	ZK12
19	1120-211101-10	Dustband	1	3281500170-	EP20190904

0202 Gear Case Assembly

减速箱总成



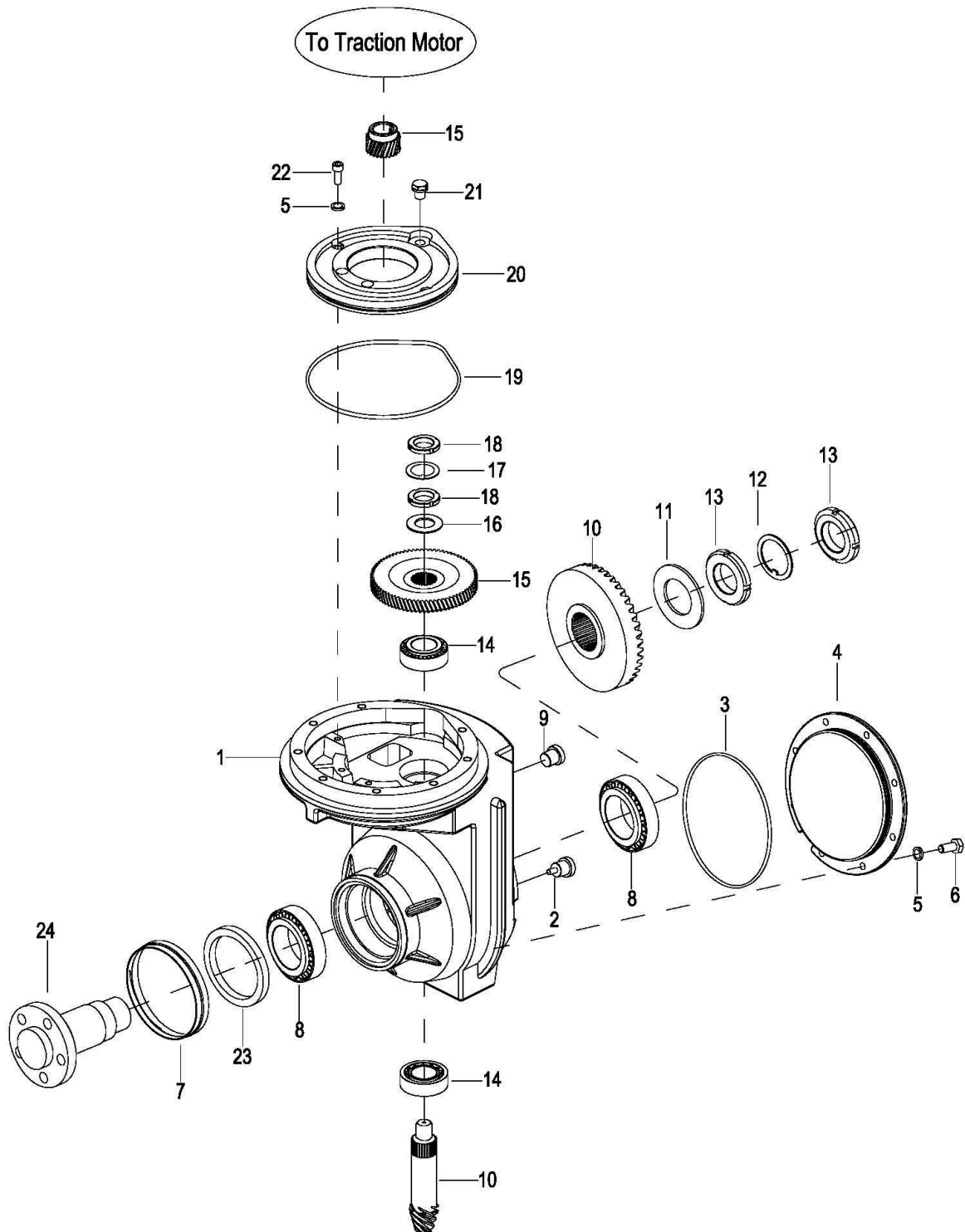
0202 Gear Case Assembly

减速箱总成

Index	Part No.	Part Name		No.	Applied Date	Remark
序号	零件编号	零件名称		数量	适用日期	备注
0	1120-240000-30	Gearbox, ZK10 , RATIO: 22.07	减速箱总成	1	-427143297	Pos.1-24
1	1120-240001-30	Gear Case	箱体	1	-427143297	
2	1120-240002-30	Plug	磁性螺塞	1	-427143297	
3	0000-000214-00	O-ring 135×3.1	O 型密封圈	1	-427143297	
4	1120-240003-30	Cover	侧盖板	1	-427143297	
5	0000-000056-00	Lockwasher ø6	弹垫	12	-427143297	
6	0000-000259-00	Bolt M6×16	螺栓	8	-427143297	
7	1120-240019-30	Washer,thickness 0.2 mm	调整垫片	Req.	-427143297	
8	0000-000961-00	Bearing 32009	圆锥滚子轴承	2	-427143297	
9	1120-240005-30	Plug	螺塞	1	-427143297	
10	1120-GB30-10	Gear Kit	齿轮修理包	1	-427143297	The kit includes 2 gears (Pos.10)
11	1120-240007-30	Washer	垫片	1	-427143297	
12	1120-240008-30	Locking plate	锁片	1	-427143297	
13	0000-000277-00	Bolt M8×25	螺栓	3	-427143297	
14	0000-001054-00	Bearing 30204	圆锥滚子轴承	2	-427143297	
15	1120-GB30-00	Gear Kit (z1/z2=25/77)	齿轮修理包	1	-427143297	The kit includes 2 gears (Pos.15)
16	0000-000379-00	Flatwasher ø14	平垫	1	-427143297	
17	0000-001055-00	Washer ø14	圆螺母用止动垫圈	1	-427143297	
18	0000-001056-00	Nut M14×1.5	自锁螺母	1	-427143297	
19	0000-000211-00	O-ring 150×3.1	O 型密封圈	1	-427143297	
20	1120-240010-30	Cover	上盖板	1	-427143297	
21	1120-240011-30	Gas Plug	通气帽组件	1	-427143297	
22	0000-000055-00	Screw M6×16	螺钉	4	-427143297	
23	1120-240017-30	Seal Washer TC80×65×8	油封	1	-427143297	
24	1120-240013-30	Output Shaft	输出齿轴	1	-427143297	

020201 Gear Case Assembly

减速箱总成



020201 Gear Case Assembly

减速箱总成

Index	Part No.	Part Name		No.	Applied Date	Remark
序号	零件编号	零件名称		数量	适用日期	备注
0	ZK12-240000-00	Gearbox, ZK12 , RATIO: 22.07	减速箱总成	1	427143298-	Pos.1-24
1	ZK12-240004-00	Gear Case	箱体	1	427143298-	
2	ZK12-240016-00	Plug	磁性堵头	1	427143298-	
3	0000-000214-00	O-ring 135×3.1	O 型密封圈	1	427143298-	
4	ZK12-240006-00	Cover	侧盖板	1	427143298-	
5	0000-000056-00	Lockwasher ø6	弹垫	12	427143298-	
6	0000-000259-00	Bolt M6×16	螺栓	8	427143298-	
7	ZK12-240010-00	Protective Sleeve	保护套	1	427143298-	
8	0000-000961-00	Bearing 32009	圆锥滚子轴承	2	427143298-	
9	ZK12-240017-00	Plug	堵头	1	427143298-	
10	ZK12-GB30-10	Gear Kit	齿轮修理包	1	427143298-	The kit includes 2 gears (Pos.10)
11	ZK12-240015-00	Washer65x36.5x3	垫片	1	427143298-	
12	ZK12-240021-00	Washer ø36	圆螺母止动垫片	1	427143298-	
13	303011000006	Nut M36	螺栓	3	427143298-	
14	0000-001054-00	Bearing 30204	圆锥滚子轴承	2	427143298-	
15	ZK12-GB30-00	Gear Kit (z1/z2=25/77)	齿轮修理包	1	427143298-	The kit includes 2 gears (Pos.15)
16	0000-000379-00	Flatwasher ø14	平垫	1	427143298-	
17	ZK12-240020-00	Washer ø14	圆螺母用止动垫圈	1	427143298-	
18	303007000004	Nut M14	螺母	1	427143298-	
19	0000-000211-00	O-ring 150×3.1	O 型密封圈	1	427143298-	
20	ZK12-240005-00	Cover	上盖板	1	427143298-	
21	01 ZK12-240019-00	Gas Plug	通气帽组件	1	427143298-	Superseded by ZK12-241000-00
	02 ZK12-241000-00	Gas Plug	通气帽组件	1	427143298-	EP20190828
22	0000-000055-00	Screw M6×16	螺钉	4	427143298-	
23	306003000017	Seal Washer TC80×55×8	油封	1	427143298-	
24	ZK12-240007-00	Output Shaft	输出齿轴	1	427143298-	

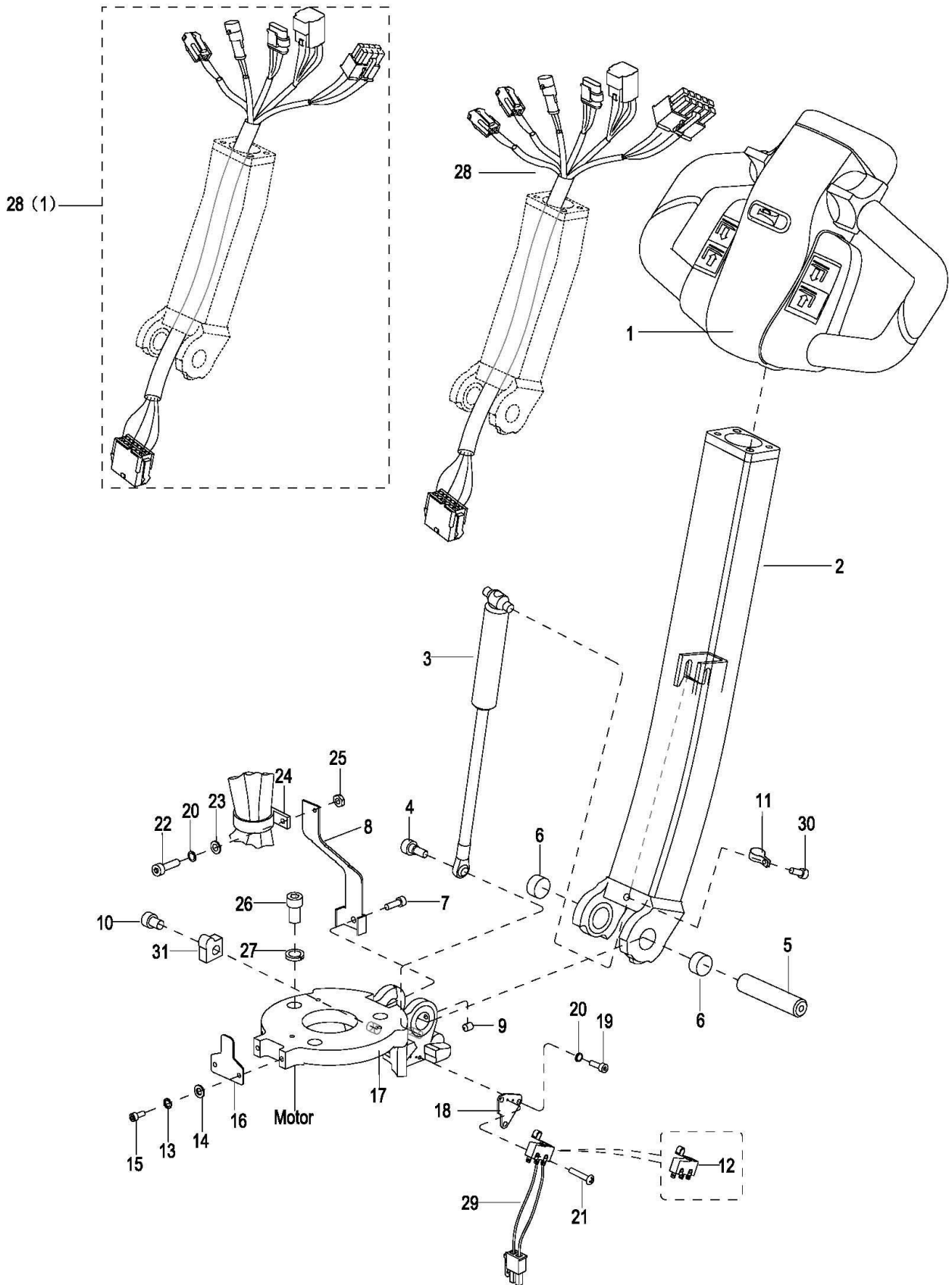
3000

Operating Control System

操作系统

0301 Operating Control Assembly

操作总成



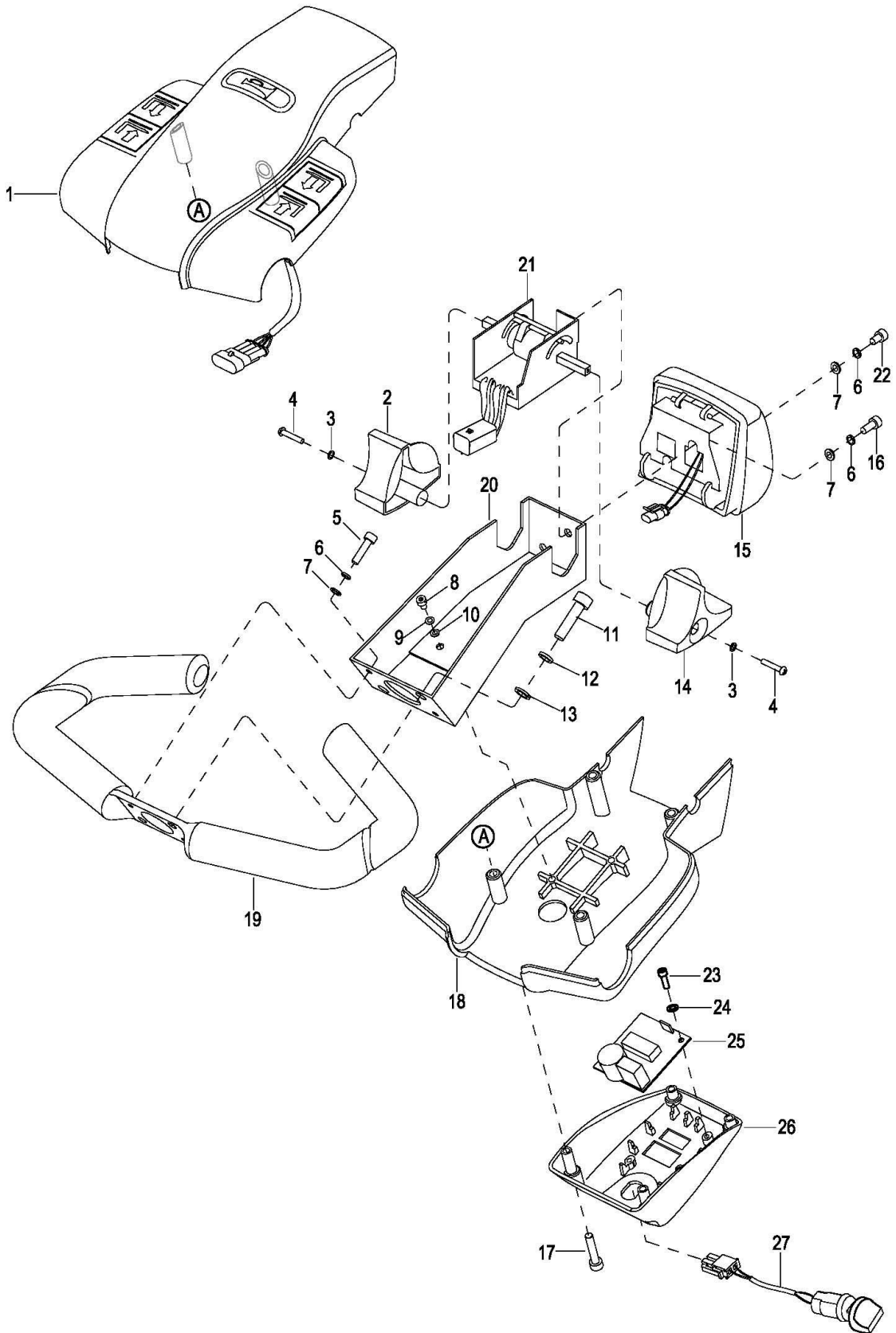
0301 Operating Control Assembly

操作总成

Index	Part No.	Part Name	No.	Applied Date	Remark
序号	零件编号	零件名称	数量	适用时间	备注
1	01 2105-340000-00-B	Control Pod Assembly See 0302	1	-427110130	With Wire, Superseded by 1115-340000-10-60
	02 1115-340000-10-60	Control Pod Assembly See 030201	1	427110131-431 2001720	With Wire
	03 1115-340000-10-61	Control Pod Assembly See 030201	1	4312001721-	BGD-22-003982
2	1120-330000-0A	Control Handle	1		
3	01 1120-320000-00	Gas Spring	1	-E212060	Superseded by 1115-320000-0A
	02 1115-320000-0A	Gas Spring	1	E212061-	EP20190903
4	0000-000322-00	Screw M8×25	1		
5	1120-300003-00	Shaft	1		
6	0000-000011-00	Bushing 2015	2		
7	0000-000032-00	Screw M6×25	1		
8	1120-300005-00	Bracket	1		
9	0000-000429-00	Screw M5×8	1		
10	0000-000030-00	Screw M10×16	1	-4311605820	
10	202800000352	Screw M8×30	1	4311605821-	BGD-22-003283
11	0000-000490-00	Harness Clamp	1		
12	1220-560001-00	Inching Switch I	2		
13	0000-000206-00	Lockwasher ø5	2		
14	0000-000390-00	Flatwasher ø5	2		
15	0000-000004-00	Screw M5×12	2		
16	1120-300004-00	Fixed Plate	1		
17	1120-300001-0A	Brake Base	1	-4311605820	
17	1120-300001-0D	Brake Base	1	4311605821-	BGD-22-003283
18	1120-300006-00	Spacer	1		
19	0000-000088-00	Screw M4×8	2		
20	0000-000122-00	Lockwasher ø4	3		
21	0000-000120-00	Screw M2×8	2		
22	0000-000378-00	Screw M4×16	1		
23	0000-000702-00	Flatwasher ø4	1		
24	0000-000491-00	Plastic Ring	1		
25	0000-000209-00	Nut M4	1		
26	0000-000109-00	Screw M8×16	3		
27	0000-000159-00	Lockwasher ø8	3		
28	2105-520002-00	WireHarness	1	-4311304004	
28	2105-520002-10	WireHarness	1	4311304005-4 312001720	BGD-21-005477
29	2105-520002-20	WireHarness	1	4312001721-	BGD-22-003982
29	1115-520009-0A	Switch Assembly	1		
30	0000-000010-00	Screw M5×6	1		
31	304003000006	Lockwasher ø10	1	-4311605820	
31	2130-300002-00	Limiting plate	1	4311605821-	BGD-22-003283

0302 Control Pod Assembly

操作手柄头总成

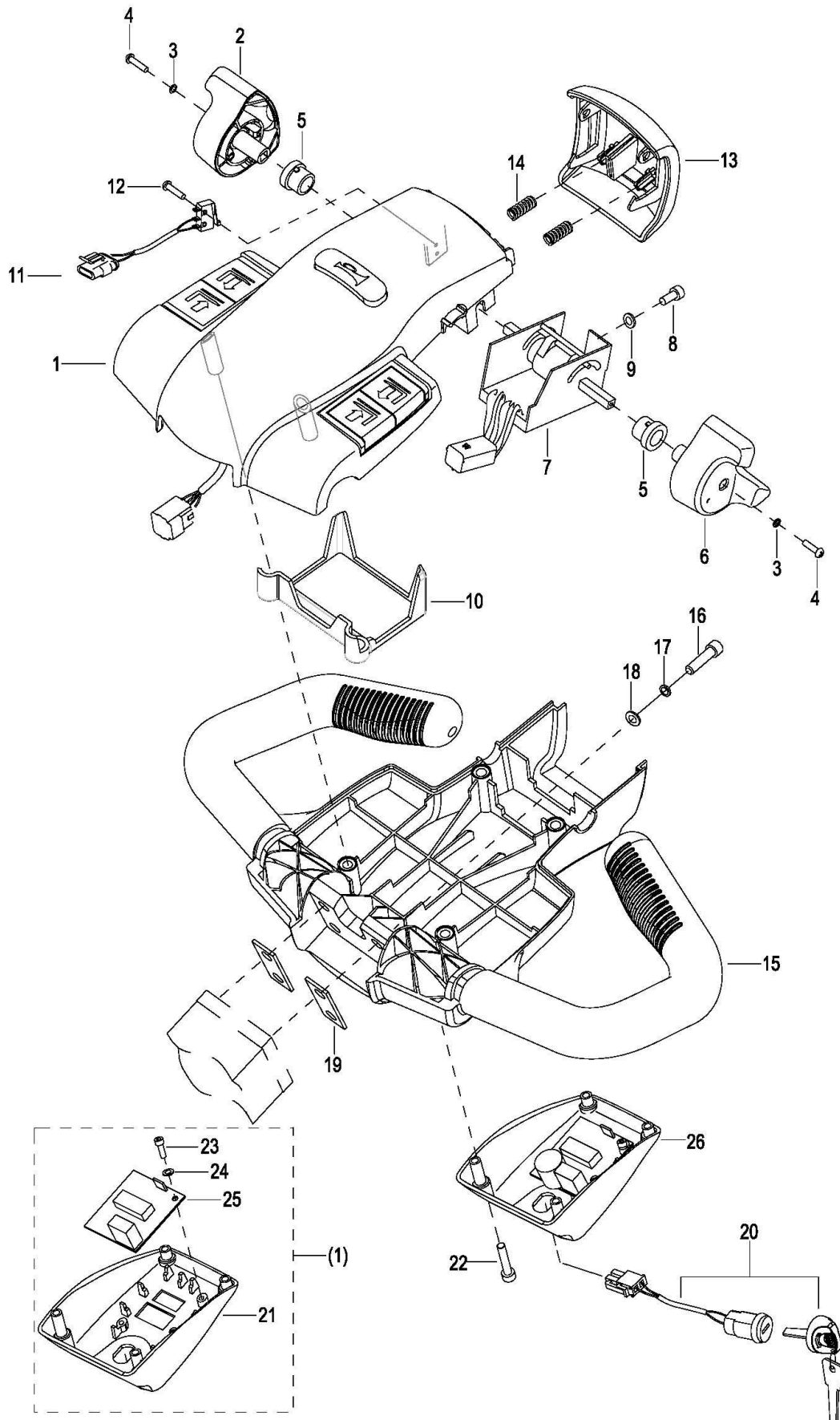


0302 Control Pod Assembly

操作手柄头总成

Index	Part No.	Part Name	No.	Applied Date	Remark
序号	零件编号	零件名称	数量	适用日期	备注
1	1120-342000-00-B	Upper Cover Assembly See 0303	1	-427110130	With Wire
2	1120-340005-00	Travelling Knob R	1	-427110130	
3	0000-000038-00	Lockwasher ø3	2	-427110130	
4	0000-000037-00	Screw M3×12	2	-427110130	
5	0000-000004-00	Screw M5×12	2	-427110130	
6	0000-000206-00	Lockwasher ø5	4	-427110130	
7	0000-000390-00	Flatwasher ø5	4	-427110130	
8	0000-000088-00	Screw M4×8	2	-427110130	
9	0000-000122-00	Lockwasher ø4	2	-427110130	
10	0000-000702-00	Flatwasher ø4	2	-427110130	
11	0000-000322-00	Screw M8×25	2	-427110130	
12	0000-000159-00	Lockwasher ø8	2	-427110130	
13	0000-000176-00	Flatwasher ø8	2	-427110130	
14	1120-340003-00	Travelling Knob L	1	-427110130	
15	1120-343000-00-B	Button Reverser Assembly See 0304	1	-427110130	With Wire
16	0000-000004-00	Screw M5×12	1	-427110130	
17	0000-001322-00	Screw M5×50	4	-427110130	
18	1114-310002-00	Cover	1	-427110130	
19	1120-341000-00	Gripe	1	-427110130	
20	1120-340001-00	Pod	1	-427110130	
21	1220-520008-0C	Accelerator Assembly	1	-427110130	
22	0000-000010-00	Screw M5×6	1	-427110130	
23	0000-000666-00	Screw M3×8	2	-427110130	
24	0000-000991-00	Flatwasher ø3	2	-427110130	
25	2105-500002-00	Power Module	1	-427110130	
26	1114-310001-10	Bottom Cover	1	-427110130	
27	1115-520019-0A	2-Way Key Switch Assembly	1	-427110130	

030201 Control Pod Assembly



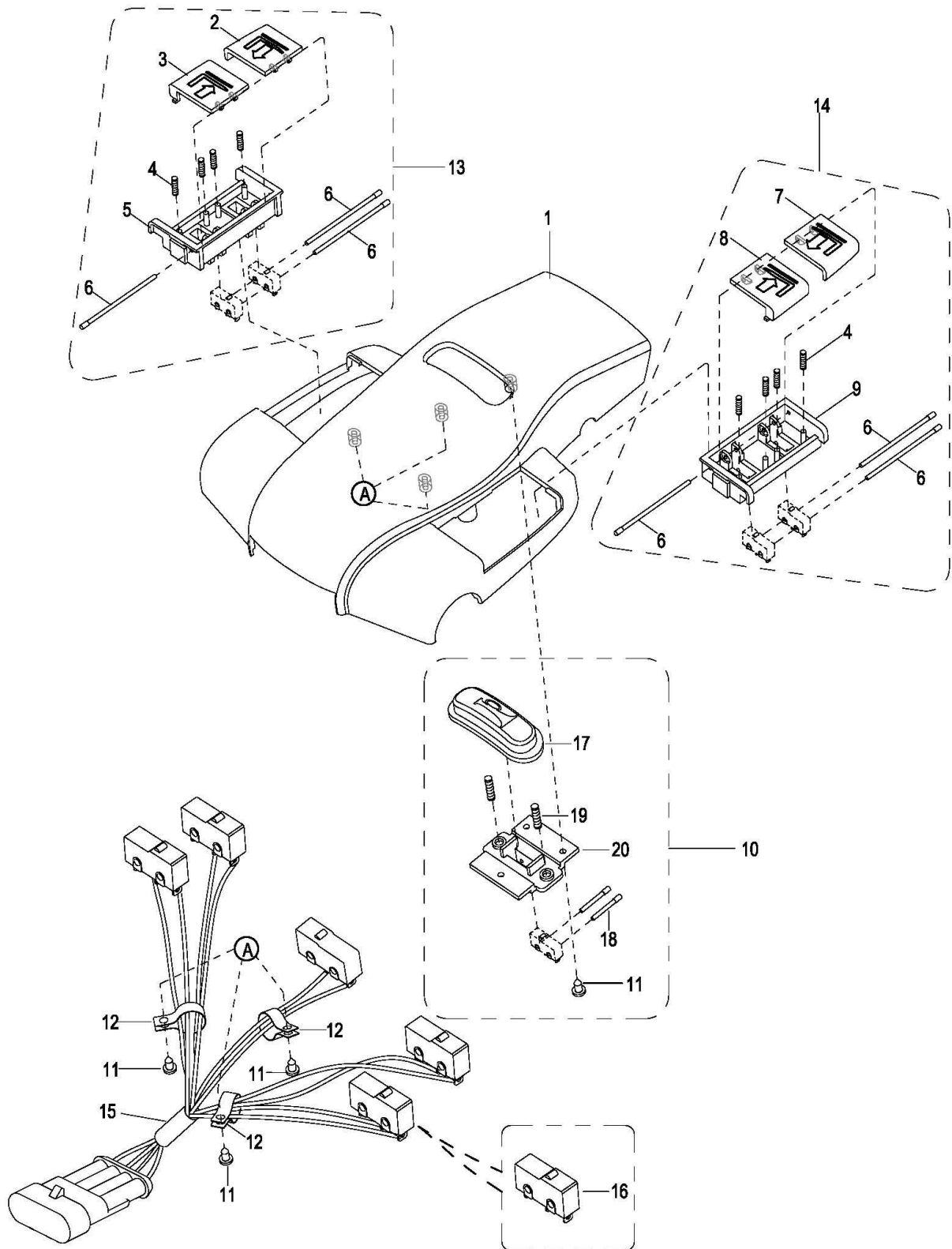
030201 Control Pod Assembly

操作手柄头总成

Index	Part No.	Part Name	No. 数	Applied Date	Remark
序号	零件编号	零件名称	量	适用日期	备注
1	1115-341000-00-10	Cap Assembly See 030301	1	427110131-	With Wire
2	1115-340005-00	Travelling Knob R	1	427110131-	
3	0000-000038-00	Lockwasher ø3	2	427110131-	
4	0000-000037-00	Screw M3×12	2	427110131-	
5	1115-340006-00	Seat	2	427110131-	Cancelled,EP20191 112
6	1115-340004-00	Travelling Knob L	1	427110131-	
7	01 1220-520008-0C	Accelerator Assembly	1	427110131--32 82101427	Superseded by 1120-340004-00-01
	02 1120-340004-00-01	Accelerator Assembly	1	3282101428-	EP20200113
8	0000-000323-00	Screw M5×16	1	427110131-	
9	0000-000390-00	Flatwasher ø5	1	427110131-	
10	1115-340007-00	Wire Harness Cover	1	427110131-	
11	1120-520009-00	Reversing Switch Wire	1	427110131-	
12	0000-000989-00	Screw M2×12	2	427110131-	
13	1115-340003-00	Cover	1	427110131-	
14	1121-310004-00	Spring	2	427110131-	
15	1115-340002-10	Cover	1	427110131-	
16	0000-000322-00	Screw M8×25	4	427110131-	
17	0000-000159-00	Lockwasher ø8	4	427110131-	
18	0000-000176-00	Flatwasher ø8	4	427110131-	
19	1115-340001-00	Washer	2	427110131-	
20	1115-520019-0A	2-Way Key Switch Assembly	1	427110131-	
21	1114-310001-00	Bottom Cover	1	427110131-431 2001720	
22	0000-001322-00	Screw M5×50	4	427110131-	
23	0000-000666-00	Screw M3×8	2	427110131-431 2001720	
24	0000-000991-00	Flatwasher ø3	2	427110131-431 2001720	
25	2105-500002-00	Power Module	1	427110131-431 2001720	
26	2YL012225003	Bottom Cover	1	4312001721-	BGD-22-003982

0303 Upper Cover Assembly

上盖总成

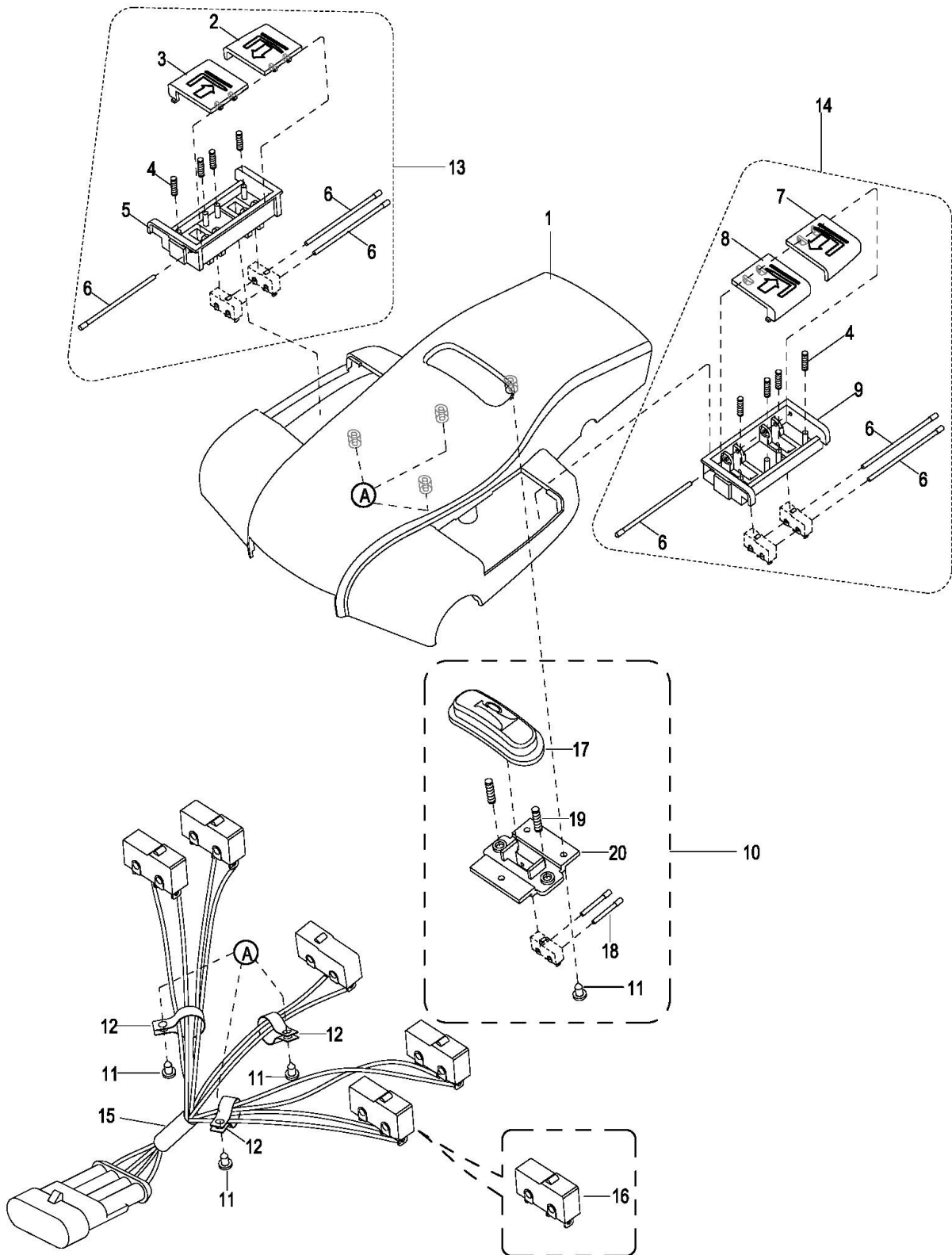


0303 Upper Cover Assembly

上盖总成

Index	Part No.	Part Name		No.	Applied Date	Remark
序号	零件编号	零件名称		数量	适用日期	备注
1	1120-342001-00	Upper Cover	上盖	1	-427110130	
2	1120-342203-00	Button For Lifting(R)	起升按钮右	1	-427110130	
3	1120-342202-00	Button For Lowering(R)	下降按钮右	1	-427110130	
4	1120-342102-00	Spring	弹簧	8	-427110130	
5	1120-342201-00	Button Bracket(R)	开关座右	1	-427110130	
6	1120-342105-00	Pin	销轴	6	-427110130	
7	1120-342104-00	Button For Lifting(L)	起升按钮左	1	-427110130	
8	1120-342103-00	Button For Lowering(L)	下降按钮左	1	-427110130	
9	1120-342101-00	Button Bracket (L)	开关座左	1	-427110130	
10	1120-342300-00	Horn Button Assembly	喇叭开关盒总成	1	-427110130	
11	0000-000039-00	Screw ST3.5×9.5	螺钉	6	-427110130	
12	0000-000490-00	Line Clamp	线夹	3	-427110130	
13	1120-342200-00	Lift And Lower Box(R) Assembly	右升降开关盒总成	1	-427110130	
14	1120-342100-00	Lift And Lower Box(L) Assembly	左升降开关盒总成	1	-427110130	
15	1220-520006-0C	Buttons Assembly	提升、下降、喇叭按钮线束	1	-427110130	
16	1220-560002-00	Inching Switch II	微动开关 II	5	-427110130	
17	1120-342002-00	Horn Button	喇叭按钮	1	-427110130	
18	1120-342005-00	Pin	销轴	2	-427110130	
19	1120-342003-00	Spring	弹簧	2	-427110130	
20	1120-342004-00	Button Bracket	喇叭开关支架	1	-427110130	

030301 Upper Cover Assembly



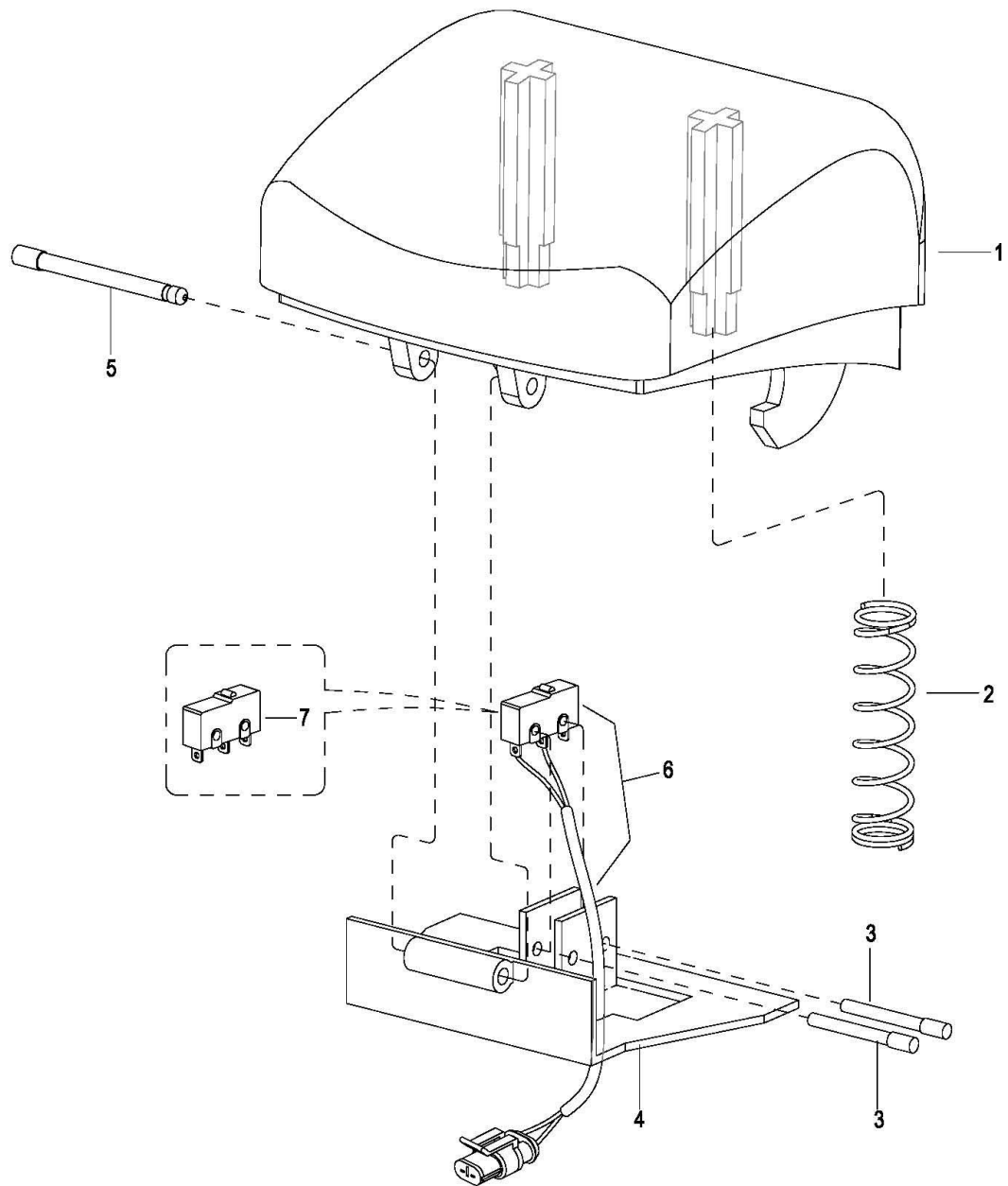
030301 Upper Cover Assembly

上盖总成

Index	Part No.	Part Name	No.	Applied Date	Remark
序号	零件编号	零件名称	数量	适用日期	备注
1	1115-341001-00	Upper Cover	1	427110131-	
2	1120-342203-00	Button For Lifting(R)	1	427110131-	
3	1120-342202-00	Button For Lowering(R)	1	427110131-	
4	1120-342102-00	Spring	8	427110131-	
5	1120-342201-00	Button Bracket(R)	1	427110131-	
6	1120-342105-00	Pin	6	427110131-	
7	1120-342104-00	Button For Lifting(L)	1	427110131-	
8	1120-342103-00	Button For Lowering(L)	1	427110131-	
9	1120-342101-00	Button Bracket (L)	1	427110131-	
10	1120-342300-00	Horn Button Assembly	1	427110131-	
11	0000-000039-00	Screw ST3.5×9.5	6	427110131-	
12	0000-000490-00	Harness Clamp	3	427110131-	
13	1120-342200-00	Lift And Lower Box(R) Assembly	1	427110131-	
14	1120-342100-00	Lift And Lower Box(L) Assembly	1	427110131-	
15	1220-520006-0C	Buttons Assembly	1	427110131-	
16	1220-560002-00	Inching Switch II	5	427110131-	
17	1120-342002-00	Horn Button	1	427110131-	
18	1120-342005-00	Pin	2	427110131-	
19	1120-342003-00	Spring	2	427110131-	
20	1120-342004-00	Button Bracket	1	427110131-	

0304 Button Reverser Assembly

紧急反向开关总成



0304 Button Reverser Assembly

紧急反向开关总成

Index	Part No.	Part Name		No.	Applied Date	Remark
序号	零件编号	零件名称		数量	适用日期	备注
1	1120-343002-00	Cover	紧急反向开关盖	1	-427110130	
2	1120-343003-00	Spring	弹簧	2	-427110130	
3	1120-342005-00	Pin	销轴	2	-427110130	
4	1120-343001-0A	Bracket	紧急反向开关板	1	-427110130	
5	1120-343004-00	Pin	销	1	-427110130	
6	1220-520005-0C	Reversing Switch Wire	反向开关线束	1	-427110130	
7	1220-560002-00	Inching Switch II	微动开关 II	1	-427110130	

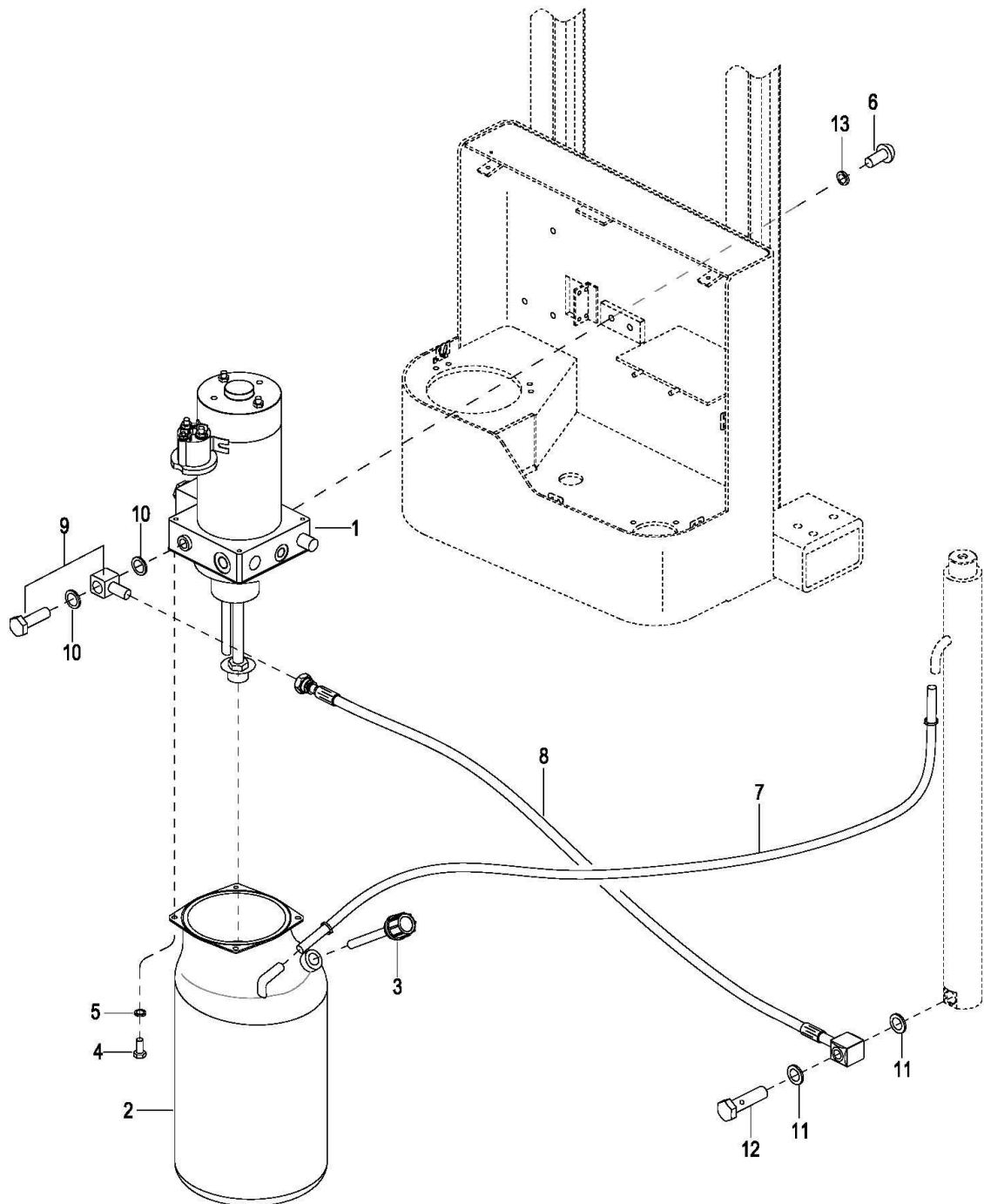
4000

Hydraulic System

液压系统

0401 Hydraulic System

液压系统



0401 Hydraulic System

液压系统

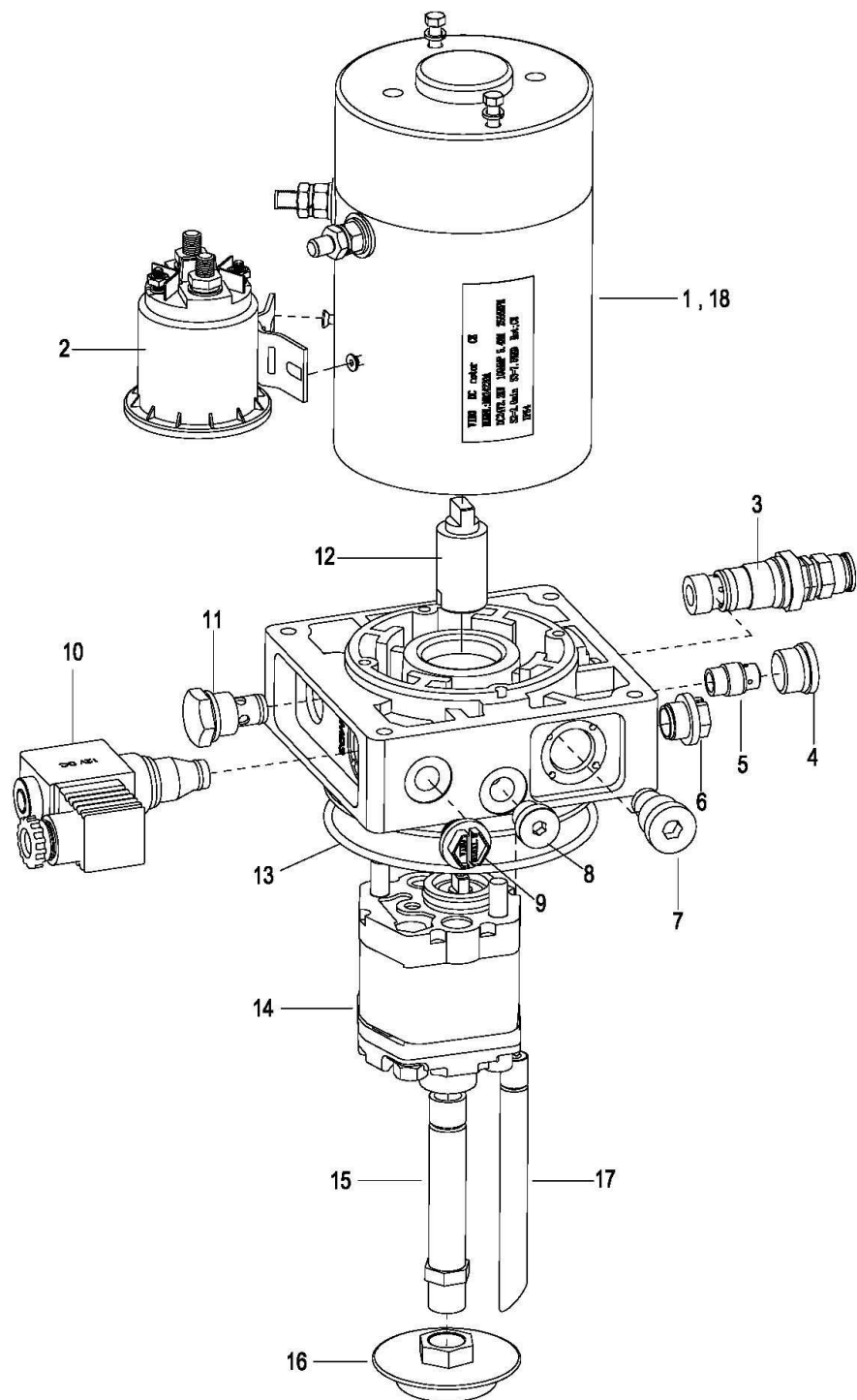
Index	Part No.	Part Name		No.	Applied	Remark
序号	零件编号	零件名称		数量	Date	备注
					适用时间	
1	2212-413000-00	Pump & Motor Assembly See 0402	液压站总成 见 0402	1		
2	2105-411000-00	Oil Tank	油箱	1		
3	2125-423000-00	Air Filter	空气滤清器	1		
4	0000-000264-00	Bolt M6×12	螺栓	4		
5	0000-000056-00	Lockwasher ø6	弹垫	4		
6	0000-000712-00	Screw M8×20	螺钉	2		
7	See Form 4.1	Oil Return Pipe	空气管 见表 4.1	1		
8	2105-400001-00	Oil Pipe	油管	1		Supersede by part # 2108-400001-5A
9	2707-381400-00	Connector G3/8-M14×1.5	铰接接头	1		
10	0000-000634-00	Washer ø18	组合垫圈	2		
11	0000-000069-00	Washer ø16	组合垫圈	2		
12	2401-163500-00	Bolt M16×35	铰接头螺栓	1		
13	0000-000159-00	Lockwasher ø8	弹垫	2		

Form 4.1

Lifting Height		Part No.
起升高度		
mm	in	空气管编号
2500	98	2108-400002-00-06
2700	106	2108-400002-00-03
3000	118	2108-400002-00-04
3300	128	2108-400002-00-05

0402 Hydraulic Pump Assembly

液压站总成



0402 Hydraulic Pump Assembly

液压站总成

Index	Part No.	Part Name		No.	Applied Date	Remark
序号	零件编号	零件名称		数量	适用时间	备注
1	2212-413001-00	Motor, 3.0kw	电机	1		
2	2108-422002-00	Relay Starter	接触器	1		
3	2108-422003-00	Relief Valve	溢流阀	1		
4	2108-422004-00	Screw Plug	G3/4 铁堵头	1		
5	2212-413002-00	Valve	节流阀	1		
6	2108-422009-00	Plastic Valve Plug	G3/8 塑料堵头	1		
7	2108-422007-00	Check Valve Plug	单向阀堵头	1		
8	2108-422008-00	Screw Plug	堵头	1		
9	2108-422006-00	Plastic Valve Plug	塑料堵头	1		
10	2108-422010-00	Solenoid Valve	电磁阀	1		
11	2108-422011-00	Check Valve	单向阀	1		
12	2108-422012-00	Connecter	联轴器	1		
13	0000-000763-00	O-Ring	O 型圈	1		
14	2108-422013-00	Pump	泵	1		
15	2212-413003-00	Suction Oil Hose	吸油管	1		
16	2108-422015-00	Suctio Filer	滤网	1		
17	2212-413004-00	Escape Oil Valye	回油管	1		
18	2108-422017-00	Brush	碳刷	1		

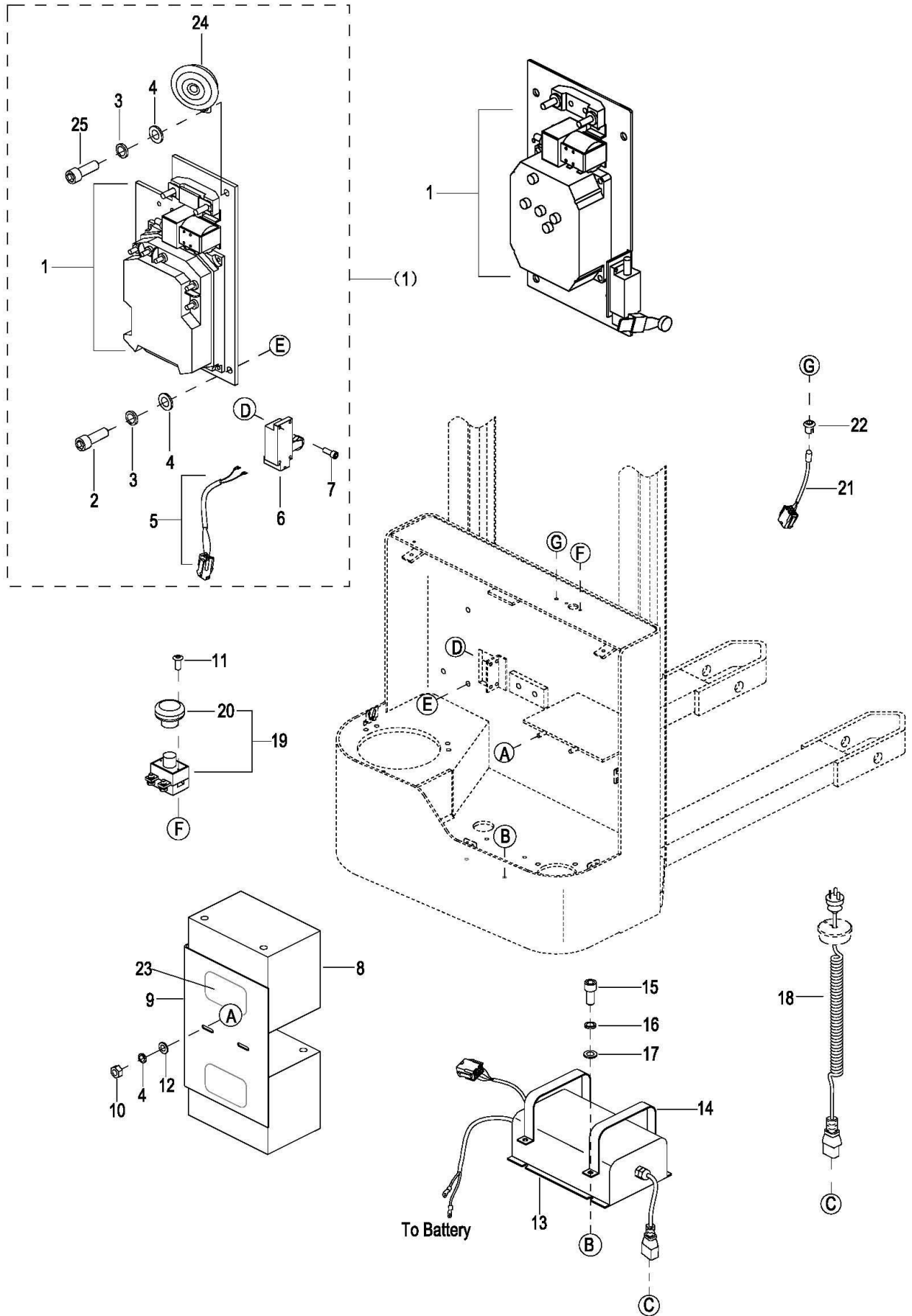
5000

Electric System

电气系统

0501 Electric Assembly

电气总成



0501 Electric Assembly

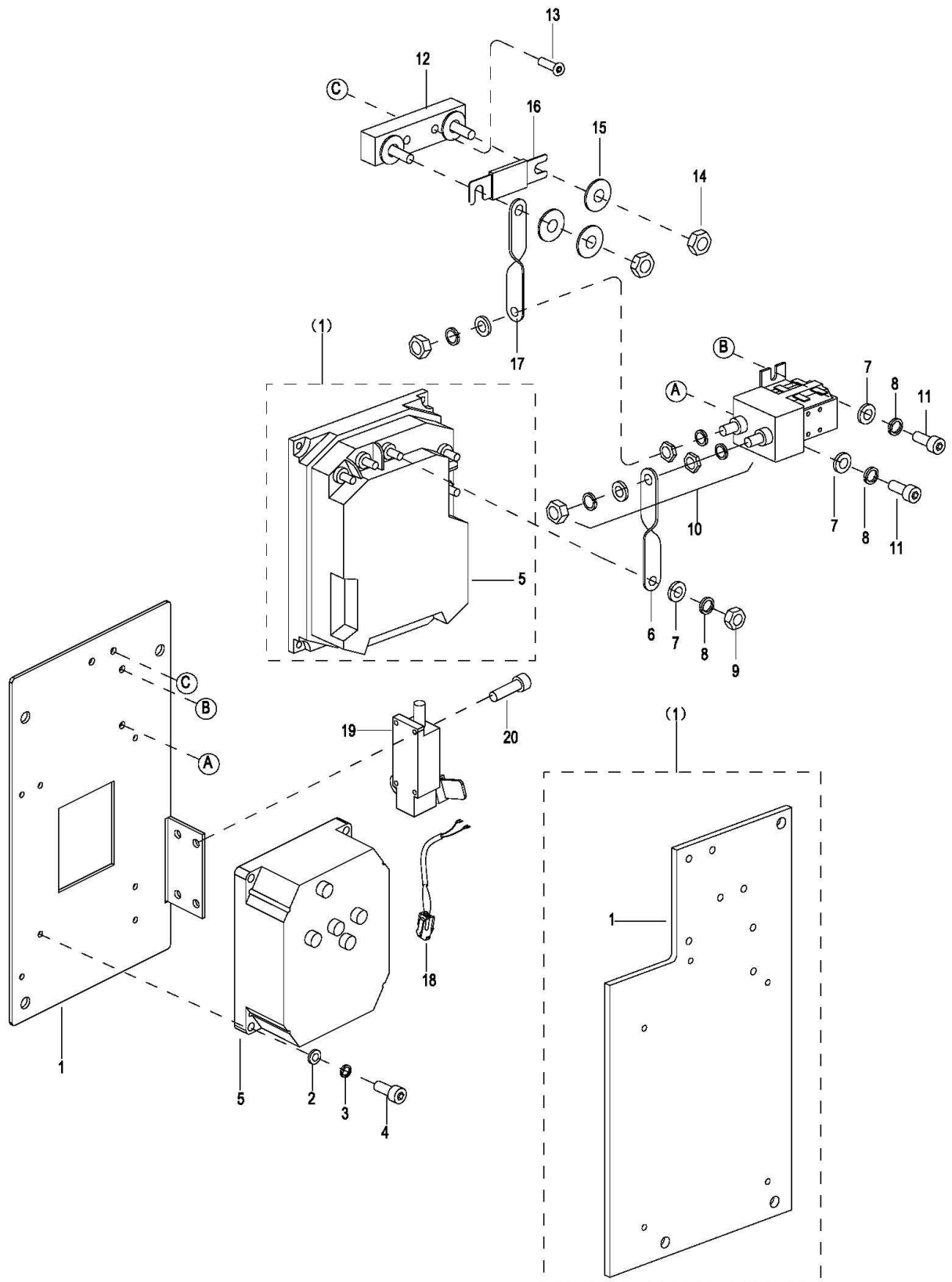
电气总成

Index	Part No.	Part Name		No.	Applied	Remark
序号	零件编号	零件名称		数量	Date 适用时间	备注
1	See 0502	Controller Board Assembly	电器板总成 见 0502	1		
2	0000-000433-00	Screw M8×12	螺钉	3		
3	0000-000194-00	Flatwasher ø8	平垫	4		
4	0000-000159-00	Lockwasher ø8	弹垫	6		
5	2108-520006-00	Half Speed Switch Harness	半速开关线束	1		
6	2125-500003-00	Half speed Switch	半速开关	1		
7	0000-000010-00	Screw M5×6	螺钉	4		
8	1118-560007-00	Battery	电瓶	2		100Ah,TN
8	1118-560008-00	Battery	电瓶	2		120Ah,FILLRIVER
8	2105-500001-00	Battery	电瓶	2		125Ah,HUAFU
9	2108-540001-00	Bracket	电瓶固定板	1		
10	0000-000196-00	Nut M8	螺母	2		
11	0000-000616-00	Screw M5×10	螺钉	2		
12	0000-000176-00	Flatwasher ø8	平垫	2		
13	2108-520015-00	Charge Assembly,15A	充电器总成	1		
13	2108-520015-10	Charge Assembly,15A	充电器总成	1		For USA BGD-21-003282
14	1115-500009-00	Charger Hoop	充电器抱箍	2		
15	0000-000088-00	Screw M4×8	螺钉	4		
16	0000-000122-00	Lockwasher ø4	弹垫	4		
17	0000-000702-00	Flatwasher ø4	平垫	4		
18	1115-500006-00	Charger Cable EUROPE	充电线 欧标	1		For EUROPE,Superseded by For
18	1120-510002-00-22	Charger Cable EUROPE	充电线 欧标	1		EUROPE,BGD-21-00 9939 For USA,Superseded
18	1115-500006-10	Charger Cable USA	充电线 美标	1		by 1120-510002-00-18 For
18	1120-510002-00-18	Charger Cable USA	充电线 美标	1		USA,BGD-21-009939
18	1115-500006-20	Charger Cable AUS	充电线 澳标	1		For AUS,Superseded by 1120-510002-00-17 For
18	1120-510002-00-17	Charger Cable AUS	充电线 澳标	1		AUS,BGD-21-009939
18	1115-500006-30	Charger Cable END	充电线 英标	1		For END,Superseded by 1120-510002-00-21 For
18	1120-510002-00-21	Charger Cable END	充电线 英标	1		END,BGD-21-009939

18	1115-500006-40	Charger Cable JAPAN	充电线 日标	1		For JAPAN,Superseded by For
18	1120-510002-00-16	Charger Cable JAPAN	充电线 日标	1		JAPAN,BGD-21-0099 39 For
18	1115-500006-50	Charger Cable CHINA	充电线 国标	1		CHINA,Superseded by 1113-500026-50 For
18	1113-500026-50	Charger Cable CHINA	充电线 国标	1		CHINA,BGD-20-0260 06,Superseded by 1120-510002-00-23 For
18	1120-510002-00-23	Charger Cable CHINA	充电线 国标	1		CHINA,BGD-21-0099 39
19	1115-510008-00	Emergency Stop Switch	紧停开关	1		
20	1115-510008-10	Button	紧停开关按钮	1		
21	1115-520013-Z0	LED Wire Harness	LED 灯总成	1		
22	1115-510009-00	Lamp Holder	LED 灯座	1		
23	2112-410005-00	Rubber Cushion	橡胶垫	2		
24	01 1120-500003-00	Horn	喇叭	1	-427150362	
	02 1120-500003-0A	Horn	喇叭	1	427150363-	EP20180905-02
25	0000-000109-00	Screw M8×16	螺钉	1		

0502 Control Board Assembly

电器板总成



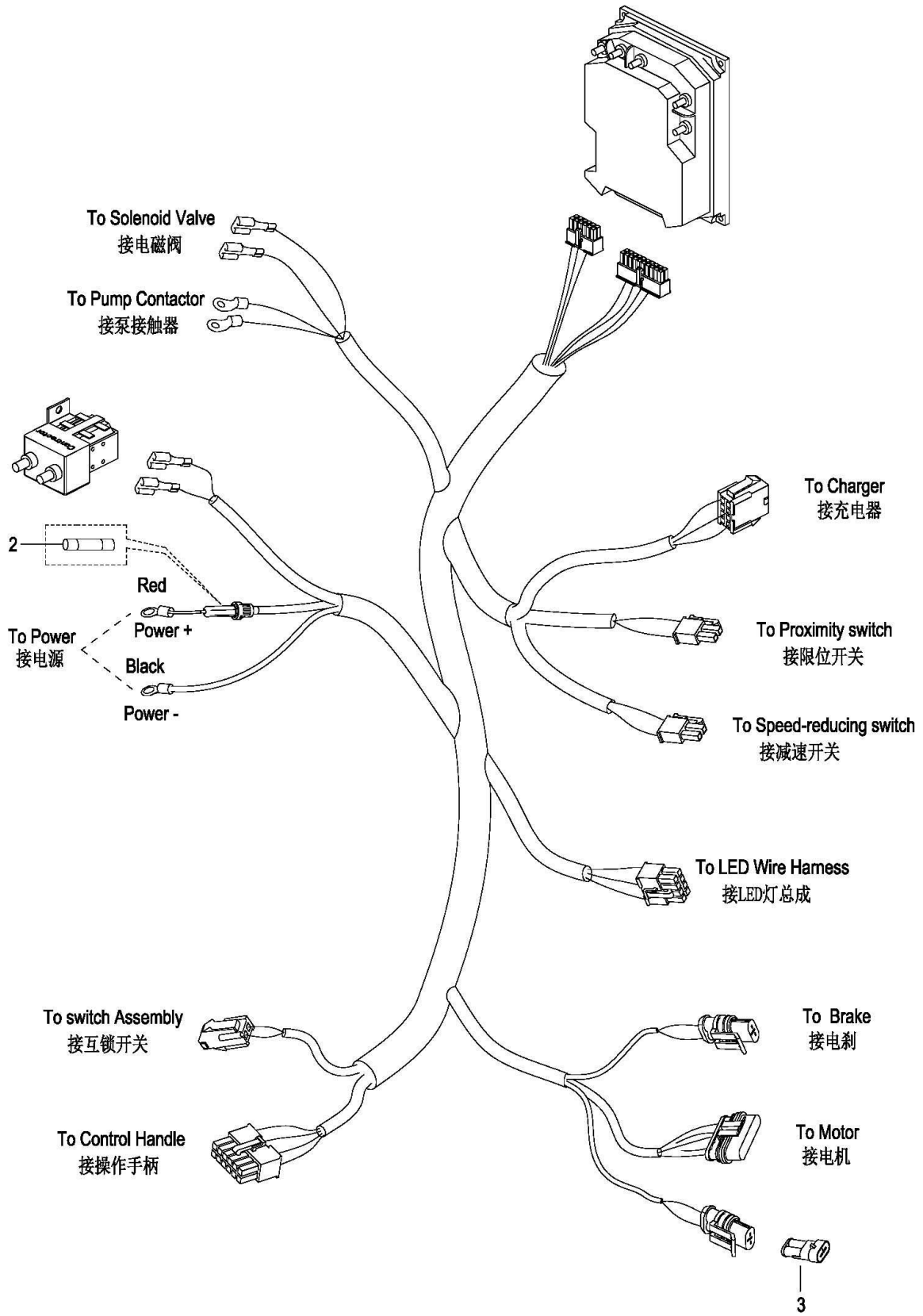
0502 Control Board Assembly Assembly

电器板总成

Index	Part No.	Part Name		No.	Applied Date	Remark
序号	零件编号	零件名称		数量	适用时间	备注
1	1420-510001-00	Setting Board	电气安装板	1	-4311304004	
1	2105-510000-00	Setting Board	电气安装板	1	4311304005-	BGD-21-005477
2	0000-000128-00	Flatwasher ø5	平垫	4		
3	0000-000206-00	Lockwasher ø5	弹垫	4		
4	0000-000004-00	Screw M5×12	螺钉	4		
5	4230-560002-00-G0	Controller	控制器	1	-4311304004	
5	3218-600100-60-00	Controller	控制器	1	4311304005-43 12001720	BGD-21-005477
5	3218-600100-60-60	Controller	控制器	1	4312001721-	BGD-22-004401
6	1120-530007-00	Copper Conductor II	铜导板 II	1		
7	0000-000123-00	Flatwasher ø6	平垫	7		
8	0000-000056-00	Lockwasher ø6	弹垫	7		
9	0000-000166-00	Nut M6	螺母	5		
10	01 1120-500005-00	Contactora	主接触器	1		Replaced by #1120-500005-10
	02 1120-500005-10	Contactora	主接触器	1		
11	0000-000077-00	Screw M6×12	螺钉	2		
12	1120-540001-00-B	Stand	保险丝座	1		
13	0000-000074-00	Screw M6×20	螺钉	2		
14	0000-000196-00	Nut M8	螺母	2		
15	0000-000210-00	Flatwasher ø8	平垫	3		
16	1120-540002-00	Fuse 200A	保险丝 200A	1		
17	1120-530006-00	Copper Conductor I	铜导板 I	1		
18	2108-520006-00	Half Speed Switch Harness	半速开关线束	1		
19	2125-500003-00	Half speed Switch	半速开关	1		
20	0000-000010-00	Screw M5×6	螺钉	4		

0503 Wiring Harness Assembly

线束总成



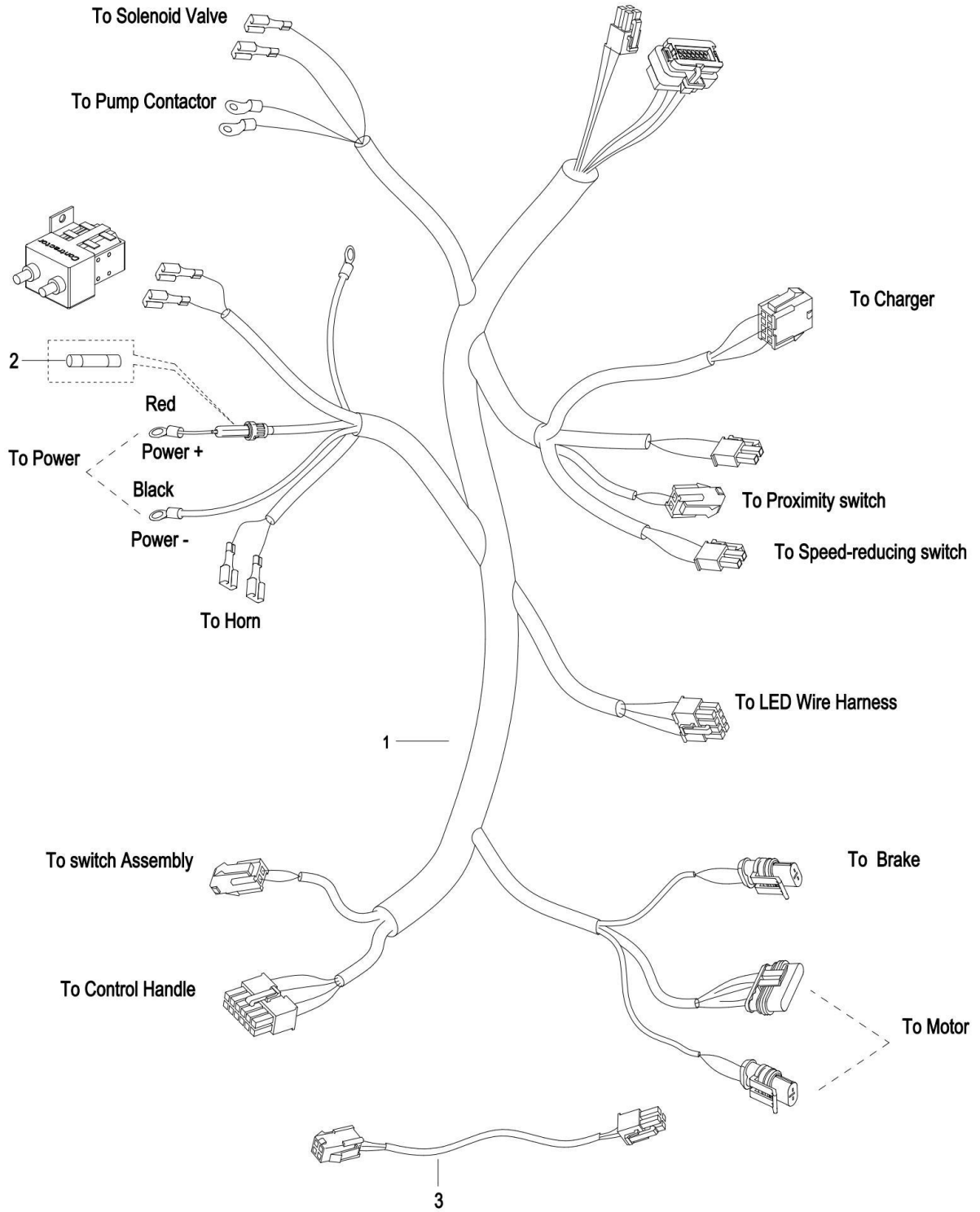
0503 Wiring Harness Assembly

线束总成

Index	Part No.	Part Name		No.	Applied Date	Remark
序号	零件编号	零件名称		数量	适用时间	备注
1	2105-520001-00	Master Wiring Harness	主线束	1	-4311304004	BGD-21-005477
2	1120-500010-00	Fuse 10A	保险丝	1		
3	2105-540001-00	Connector	接插件堵头	1	427162071-	

050301 Wiring Harness Assembly

线束总成



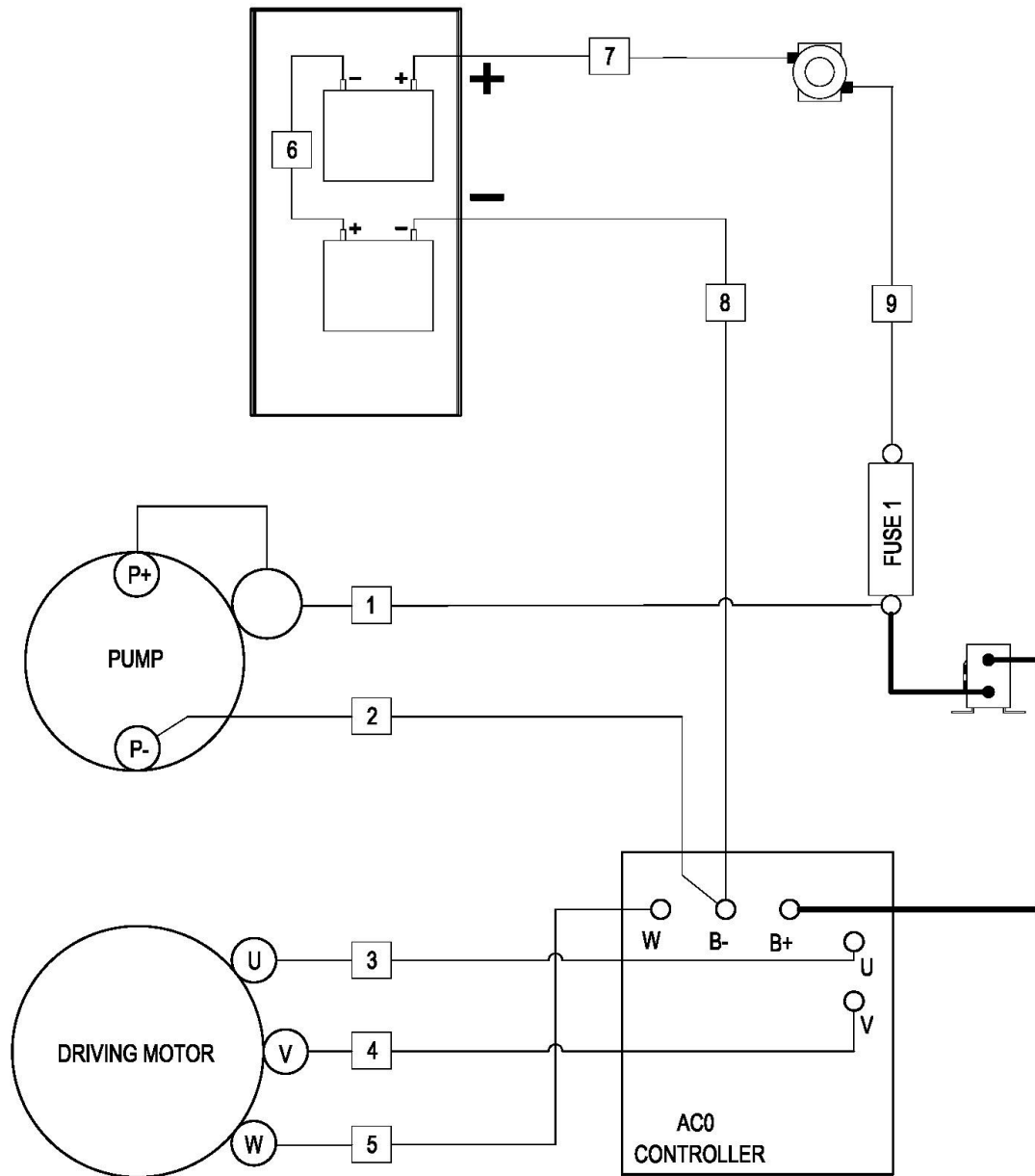
050301 Wiring Harness Assembly

线束总成

Index 序号	Part No. 零件编号	Part Name 零件名称		No. 数量	Applied Date 适用时间	Remark 备注
1	2105-520001-10	Master Wiring Harness	主线束	1	4311304005-43 12001720	BGD-21-005477
1	2105-520001-20	Master Wiring Harness	主线束	1	4312001721-	BGD-22-003982
2	1120-500010-00	Fuse 10A	保险丝	1		
3	2108-520008-00	External Wiring Harness	外接线	1		

0504 Cable Assembly

电缆总成



0504 Cable Assembly**电缆总成**

Index	Part No.	Part Name		No.	Applied Date	Remark
序号	零件编号	零件名称		数量	适用时间	备注
1	2105-530004-00	Pump Power Line +	液压站正线	1		
2	2105-530005-00	Pump Power Line -	液压站负线	1		
3	2105-530008-00	Motor Line U	电机 U-线	1		
4	2105-530007-00	Motor Line V	电机 V-线	1		
5	2105-530006-00	Motor Line W	电机 W-线	1		
6	2105-530009-00	Battery Cable	电瓶间电缆	1		
7	2105-530001-00	Power+ Cable	电源电缆正极	1		
8	2105-530002-00	Power- Cable	电源电缆负极	1		
9	2105-530003-00	Emergency Stop Switch Cable	紧急开关电缆	1		

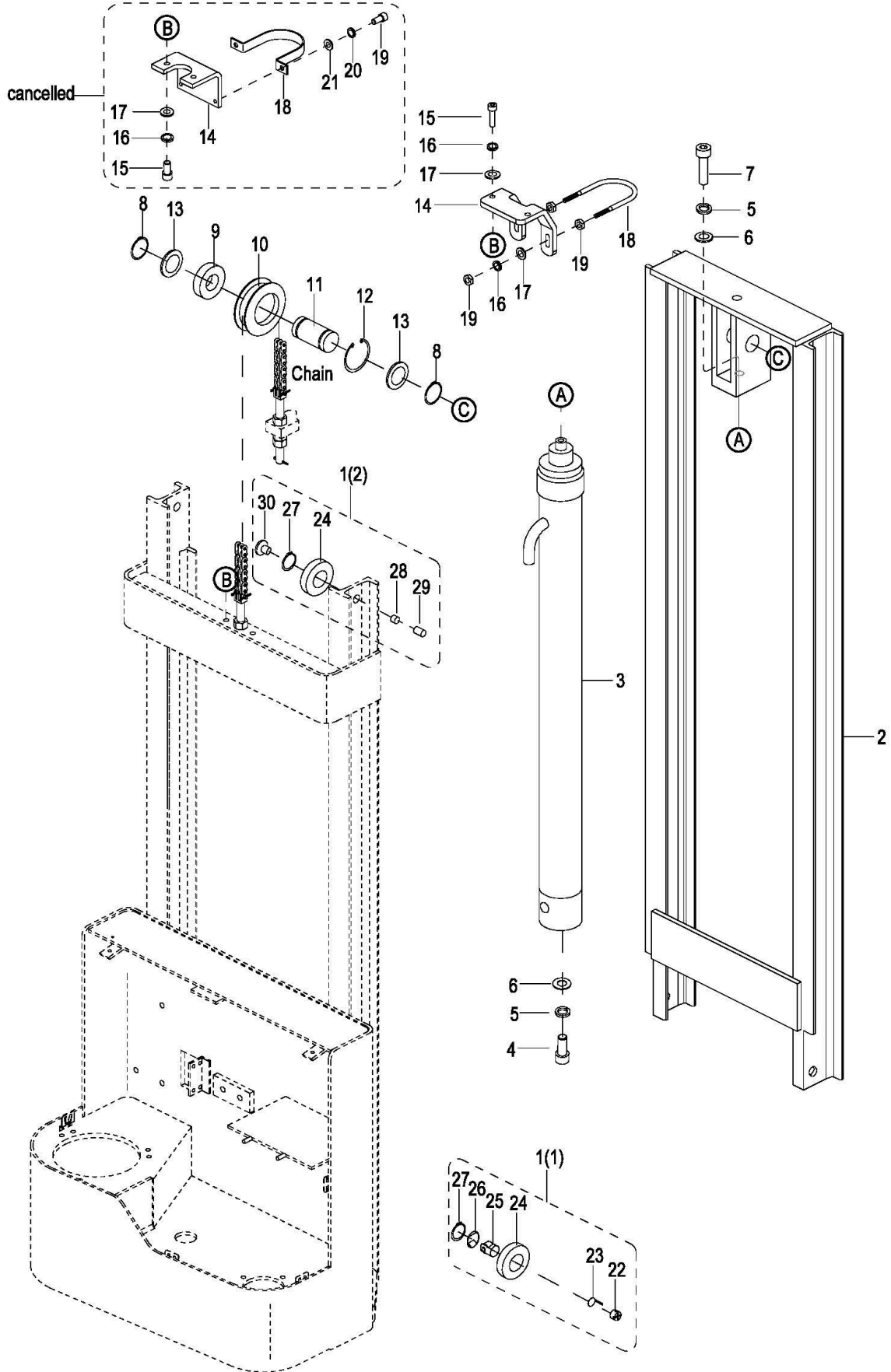
6000

Lifting System

起升系统

0601 Duplex Mast Lifting System

两级门架起升系统



0601 Duplex Mast Lifting System

两级门架起升系统

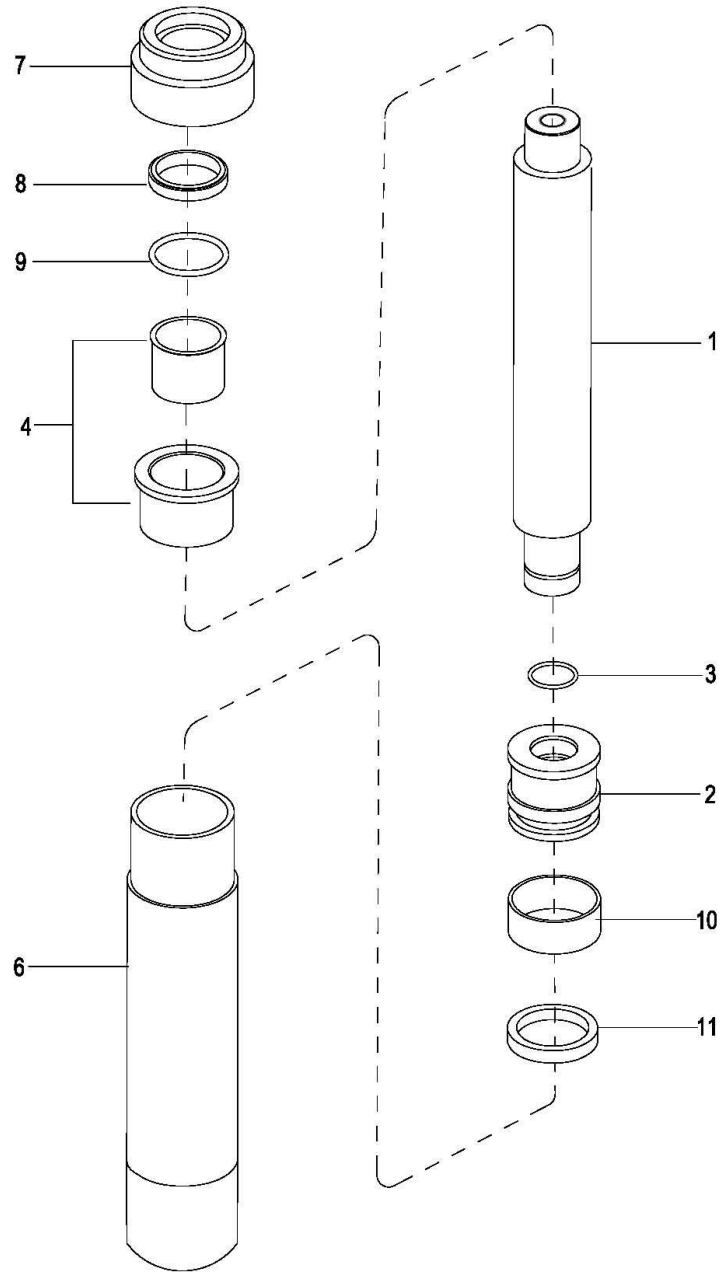
Index	Part No.	Part Name	No.	Applied Date	Remark
序号	零件编号	零件名称	数量	适用时间	备注
1	01 2125-612000-00	Roller Assembly	4	-426131408	
	02 2125-61200X-00	Roller Assembly	4	426131409-	EP20190301
2	See Form 6.1	Inner Mast	1		
3	See Form 6.2	Lifting Cylinder	1		See 0602
4	0000-000075-00	Screw M12×30	1		
5	0000-000060-00	Lockwasher ø12	2		
6	0000-000373-00	Flatwasher ø12	2		
7	0000-000374-00	Screw M12×30	1		
8	0000-000756-00	Retainer Ring ø40	2		
9	0000-001387-10	Bearing 6208	1		
10	01 2105-600001-00	Chain roller	1	-426131408	
	02 2105-600001-0B	Chain roller	1	426131409-	EP20190301
11	2105-600003-00	Chain Shaft	1		
12	0000-000987-00	Elastic Collar Φ80	1		
13	2105-600002-00	flatwasher	2		
14	01 2105-600005-00	Plate	1	-426131408	
	02 2105-600001-6A	Plate	1	426131409-	EP20190301
15	0000-000109-00	Screw M8×16	2		
16	0000-000159-00	Lockwasher ø8	4		
17	0000-000176-00	Flatwasher ø8	4		
18	01 2105-600004-00	Cylinder Bracket	1	-426131408	
	02 2108-600011-6A	Bolt-U	1	426131409-	
19	01 0000-000055-00	Screw M6×16	2	-426131408	
	02 0000-000196-00	Nut M8	4	426131409-	
20	0000-000056-00	Lockwasher ø6	2	-426131408	
21	0000-000380-00	Flatwasher ø6	2	-426131408	
22	2125-612004-00	Screw	4	-426131408	
23	2125-612007-00	Snap Ring	4	-426131408	
24	2125-612001-00	Main Roller Assembly	4		
25	2125-612002-00	Assistant Roller	4	-426131408	
26	2125-612005-00	Dust Snap	4	-426131408	
27	0000-000183-00	Retainer Ring ø35	4		
28	302005000003	Screw M12×10	4	426131409-	EP20190301
29	302005000004	Screw M12×20	4	426131409-	EP20190301
30	2108-600012-60	Washer	4	426131409-	EP20190301

Form 6.1

Lifting Height 起升高度		Inner Mast No. 内门架编号	Applied Date 适用时间
mm	in		
2500	98	2105-620000-00-01	-426131408
		2105-620000-6B-01	426131409-4281001943
		2105-620000-6C-01	4281001944- EP20190301
2700	106	2105-620000-00-02	-426131408
		2105-620000-6B-02	426131409-4281001943
		2105-620000-6C-02	4281001944- EP20190301
3000	118	2105-620000-00-03	-426131408
		2105-620000-6B-03	426131409-4281001943
		2105-620000-6C-03	4281001944- EP20190301
3300	128	2105-620000-00-04	-426131408
		2105-620000-6B-04	426131409-4281001943
		2105-620000-6C-04	4281001944- EP20190301

0602 Lifting Cylinder

起升油缸



0602 Lifting Cylinder

起升油缸

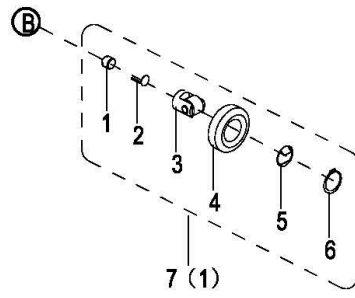
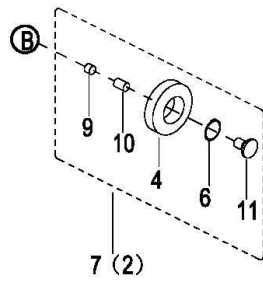
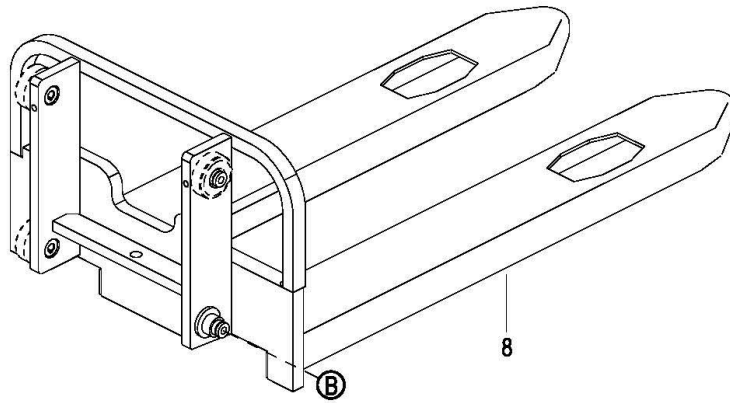
Index 序号	Part No. 零件编号	Part Name 零件名称		No. 数量	Applied Date 适用时间	Remark 备注
1	See Form 6.2	Piston Rod	活塞杆 见表 6.2	1		Parts being phased out
2	2125-410002-00	Piston	活塞	1		Parts being phased out
3	2125-410003-00	Collar	钢丝挡圈	1		Parts being phased out
4	2125-410006-00	Bushing	衬套	1		Parts being phased out
6	See Form 6.2	Cylinder	油缸体 见表 6.2	1		Parts being phased out
7	2125-410004-0A	Cap	缸盖	1		Parts being phased out
8	0000-000084-00	Ring Wiper 35×43×5-6.5	防尘圈	1		Parts being phased out
9	0000-000370-00	O-ring 40×3.1	O 型密封圈	1		Parts being phased out
10	2125-410005-00	Ring Back Up 50×20×2.5	支撑环	1		Parts being phased out
11	0000-000512-00	Rod Packing 40×50×6	Yx 密封圈	1		Parts being phased out
KIT	2110-2BG	Seal Kit for Cylinder (include item8,9,11)	油缸修理包 (包含序号 8, 9, 11)	1		

Form 6.2

Lifting Height 起升高度		Cylinder Part No. 油缸零件编号	Cylinder Tube 油缸体	Piston Rod 活塞杆
mm	in			
2500	98	2108-410000-60-04	2108-411000-60-04	2125-410001-00-01
2700	106	2108-410000-60-01	2108-411000-60-01	2125-410001-00-02
3000	118	2108-410000-60-02	2108-411000-60-02	2125-410001-00-03
3300	128	2108-410000-60-03	2108-411000-60-03	2125-410001-00-04

0603 Fork Frame

货叉架



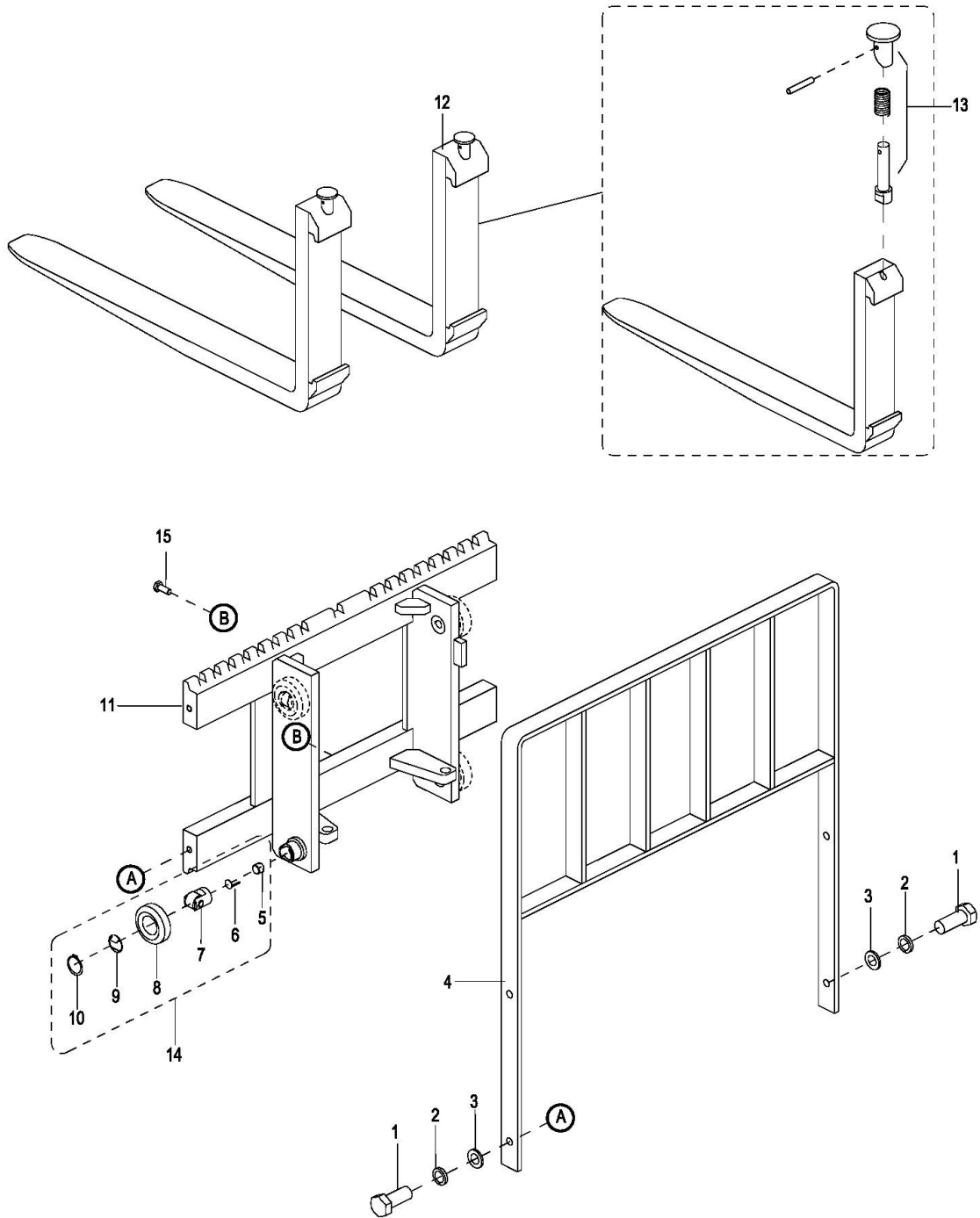
0603 Fork Frame

货叉架

Index	Part No.	Part Name	No.	Applied Date	Remark
序号	零件编号	零件名称	数量	适用时间	备注
1	2125-631104-00	Screw	4	-426131408	
2	2125-612007-00	Snap Ring	4	-426131408	
3	2125-612002-00	Assistant Roller	4	-426131408	
4	2125-612001-00	Main Roller Assembly	4		
5	2125-612005-00	Dust Snap	4	-426131408	
6	0000-000183-00	Retainer Ring ø35	4		
7	01 2125-631100-00	Roller Assembly	4	-426131408	
	02 2125-61200X-00	Roller Assembly	4	426131409-	EP20190301
8	01 2105-630000-00	Fork Frame	1	-426131408	
	02 2105-630000-0A	Fork Frame	1	426131409-	EP20190301 For 1.5t 570mm
8	2105-630000-BS	Fork Frame	1		For 1.8t 570mm
8	2105-612000-80	Fork Frame	1		For 1.8t 685mm
9	302005000003	Screw M12×10	4	426131409-	EP20190301
10	302005000004	Screw M12×20	4	426131409-	EP20190301
11	2108-600012-60	Washer	4	426131409-	EP20190301

0604 Fork Frame Assembly(Straddle)

货叉架总成(宽腿)



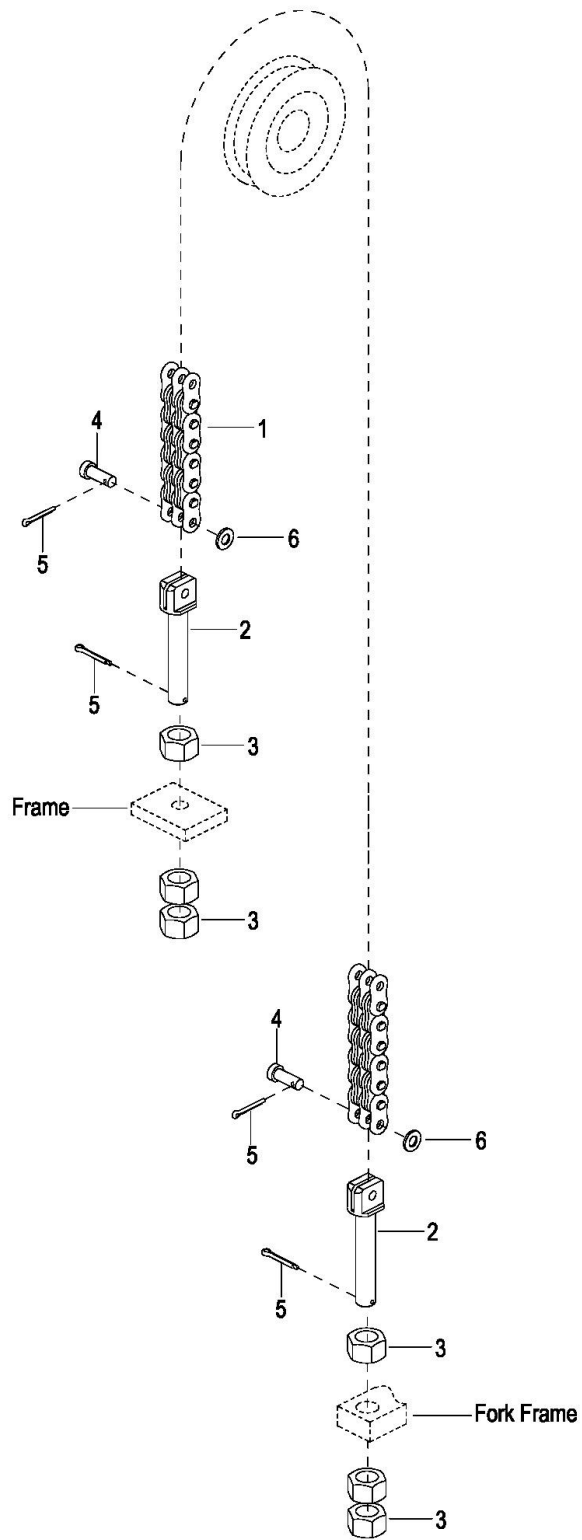
0604 Fork Frame Assembly(Straddle)

货叉架总成(宽腿)

Index	Part No.	Part Name	No. 数	Applied Date	Remark
序号	零件编号	零件名称	量	适用日期	备注
1	0000-000221-00	Bolt M12×30	4		
2	0000-000060-00	Lockwasher ø12	4		
3	0000-000373-00	Flatwasher ø12	4		
4	2125-632000-00	Blocking Shelf	1		
5	2125-631104-00	Screw	4		
6	2125-612007-00	Snap Ring	4		
7	2125-612002-00	Assistant Roller	4		
8	2125-612001-00	Main Roller Assembly	4		
9	2125-612005-00	Dust Snap	4		
10	0000-000183-00	Retainer Ring ø35	4		
11	01 2105-631000-70	Fork Frame	1	-426131408	
	02 2105-631000-7A	Fork Frame	1	426131409-	EP20190301
12	2125-630001-00-01	Fork	2		L=1070mm
12	2125-630001-00-06	Fork	2		L=1150mm
12	2125-630001-00-02	Fork	2		L=1200mm
13	2125-630001-10	Pin Assembly	2		
14	2125-631100-00	Roller Assembly	1		
15	0000-000030-00	Screw M10×16	1		

0605 Duplex Mast Chain Assembly

两级门架链条总成



0605 Duplex Mast Chain Assembly

两级门架链条总成

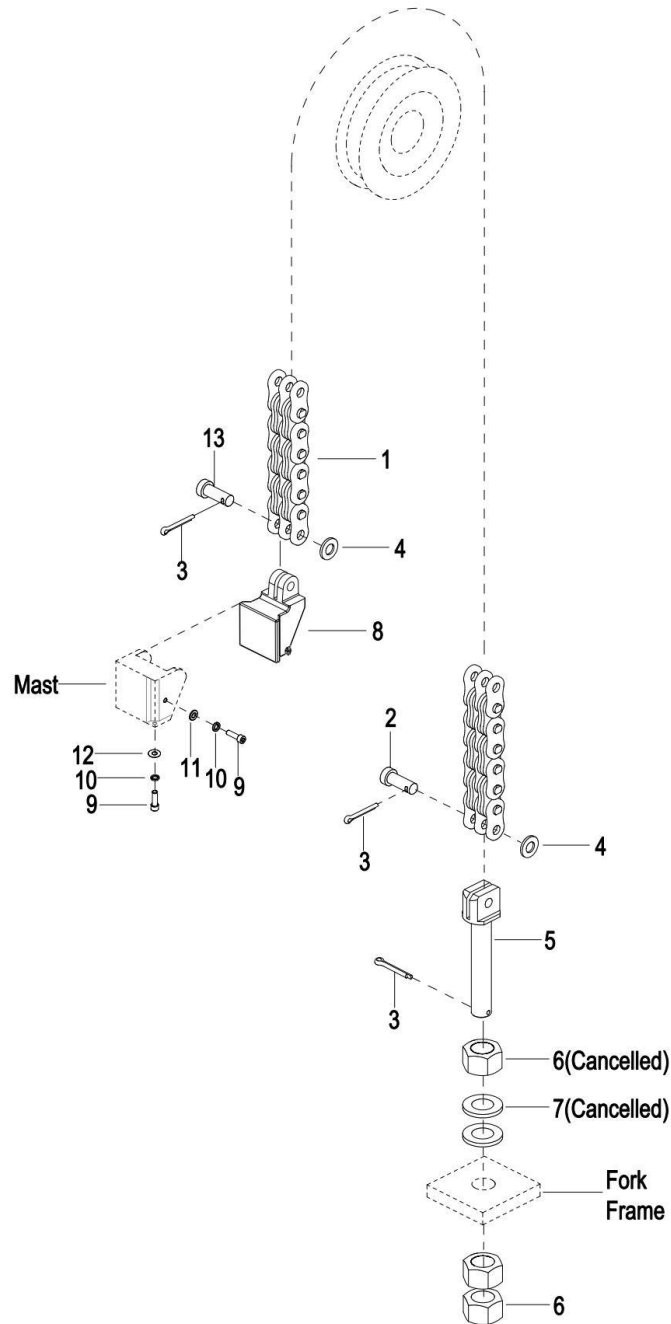
Index 序号	Part No. 零件编号	Part Name 零件名称		No. 数量	Applied Date 适用时间	Remark 备注
1	See Form 6.3	Chain LH1244	链条 LH1244	1		Parts being phased out
2	2105-640001-00	Bolt	链条螺栓	2	-426131408	Parts being phased out
3	0000-000237-00	Nut M16×1.5	螺母	6		
4	2105-640002-00	Pin Shaft	销轴	2	-426131408	Parts being phased out
5	0000-000188-00	Pin ø3.2×20	开口销	4		
6	0000-000176-00	Flatwasher ø8	平垫	2		

Form 6.3

Mast 门架类型	Lifting Height(h ₃) 起升高度 (mm)		Standard Of Chain 链条规格	Part No. Of Chain 链条编号	Applied Date 适用时间	Remark 备注
	mm	in				
	Duplex Mast 两级门架	2500				
2700		106	66	2105-640003-00-02	-426131408	Parts being phased out
3000		118	72	2105-640003-00-03	-426131408	Parts being phased out
3300		128	78	2105-640003-00-04	-426131408	Parts being phased out

060501 Duplex Mast Chain Assembly

两级门架链条总成



060501 Duplex Mast Chain Assembly

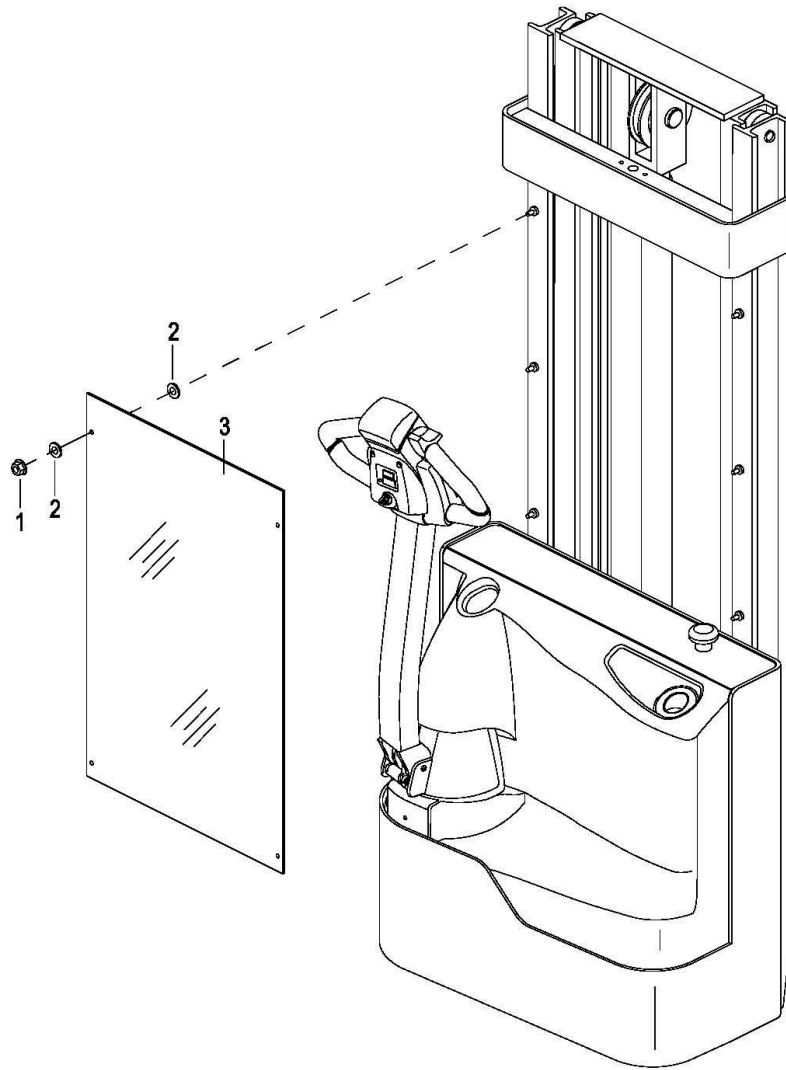
两级门架链条总成

Index	Part No.	Part Name	No.	Applied Date	Remark
序号	零件编号	零件名称	数量	适用时间	备注
0	2105-640000-0D-01	Chain	链条总成	1	H=2500mm
0	2105-640000-0D-02	Chain	链条总成	1	H=2700mm
0	2105-640000-0D-03	Chain	链条总成	1	H=3000mm
0	2105-640000-0D-04	Chain	链条总成	1	H=3300mm
0	2105-640000-0D-05	Chain	链条总成	1	H=3600mm
0	2105-640000-7B-01	Chain	链条总成	1	H=2500mm, Straddle
0	2105-640000-7B-02	Chain	链条总成	1	H=2700mm, Straddle
0	2105-640000-7B-03	Chain	链条总成	1	H=3000mm, Straddle
0	2105-640000-7B-04	Chain	链条总成	1	H=3300mm, Straddle
0	2105-640000-7B-05	Chain	链条总成	1	H=3600mm, Straddle
1	2105-640003-0C-01	Chain LH1234	链条	1	426131409- 2500mm, Parts being phased out
1	2105-640003-7A-01	Chain LH1234	链条	1	426131409- Straddle 2500mm, Parts being phased out
1	2105-640003-0C-02	Chain LH1234	链条	1	426131409- 2700mm, Parts being phased out
1	2105-640003-7A-02	Chain LH1234	链条	1	426131409- Straddle 2700mm, Parts being phased out
1	2105-640003-0C-03	Chain LH1234	链条	1	426131409- 3000mm, Parts being phased out
1	2105-640003-7A-03	Chain LH1234	链条	1	426131409- Straddle 3000mm, Parts being phased out
1	2105-640003-0C-04	Chain LH1234	链条	1	426131409- 3300mm, Parts being phased out
1	2105-640003-7A-04	Chain LH1234	链条	1	426131409- Straddle 3300mm, Parts being phased out
1	2105-640003-0C-05	Chain LH1234	链条	1	426131409- 3500mm, Parts being phased out
1	2105-640003-7A-05	Chain LH1234	链条	1	426131409- Straddle 3500mm, Parts being phased out
1	2105-640003-0C-06	Chain LH1234	链条	1	426131409- 3600mm, Parts being phased out
1	2105-640003-7A-06	Chain LH1234	链条	1	426131409- Straddle 3600mm, Parts being phased out
2	2105-640002-0C	Pin Shaft	销轴	1	426131409- EP20190301, Parts being phased out
2	2105-640002-7A	Pin Shaft	销轴	1	426131409- Straddle EP20190301, Parts being phased out
3	307001000028	Pin $\phi 3.2 \times 30$	开口销	3	
4	0000-000176-00	Flatwasher $\phi 8$	平垫	2	
5	2105-640001-0C	Bolt	链条螺栓	2	426131409- EP20190301, Parts being
5	2105-640001-7A	Bolt	链条螺栓	2	426131409- Straddle EP20190301, Parts being
6	0000-000237-00	Nut M16 \times 1.5	螺母	2	
7	0000-000220-00	Flatwasher $\phi 16$	平垫	2	426131409-432160 0017 BGD-23-003127

8	2105-600007-00	Padlock	锁头	1	426131409-	
9	0000-000035-00	Screw M5X20	螺钉	2	426131409-	
10	0000-000206-00	Lockwasher ø5	弹垫	2	426131409-	
11	0000-000128-00	Flatwasher ø5	平垫	1	426131409-	
12	304001000009	Flatwasher ø5	平垫	1	426131409-	
13	2105-640003-0C	Pin Shaft	销轴	1	426131409-	EP20190301, Parts being
13	2105-640003-7A	Pin Shaft	销轴	1	426131409-	Straddle EP20190301, Parts being

0606 Windshield Assembly

安全挡板总成



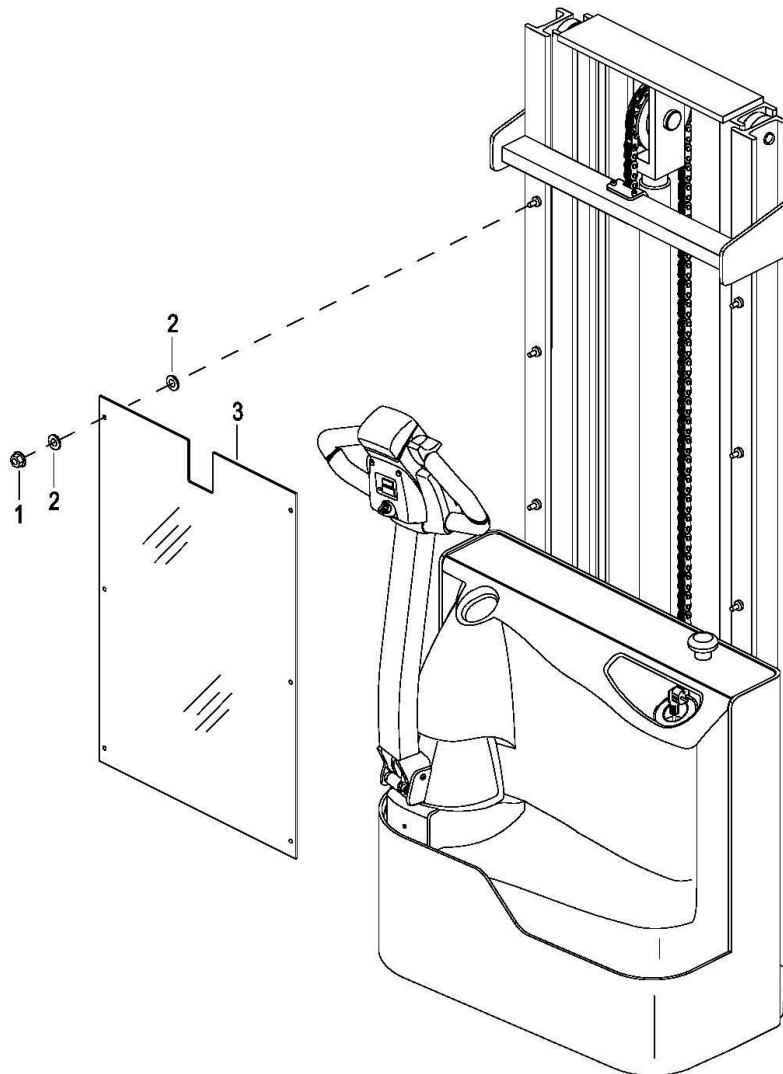
0606 Windshield Assembly

安全挡板总成

Index	Part No.	Part Name		No.	Applied Date	Remark
序号	零件编号	零件名称		数量	适用时间	备注
1	0000-001176-00	Nut M8	螺母	6		
2	2214-150002-00	Washer	垫片	12		
3	2111-110004-00-05	Windshield	安全挡板	1	-426120945	LH: 2500mm
3	2111-110004-00-06	Windshield	安全挡板	1	-426120945	LH: 2700mm
3	2111-110004-00-07	Windshield	安全挡板	1	-426120945	LH: 3000mm
3	2111-110004-00-09	Windshield	安全挡板	1	-426120945	LH: 3300mm

060601 Windshield Assembly

安全挡板总成



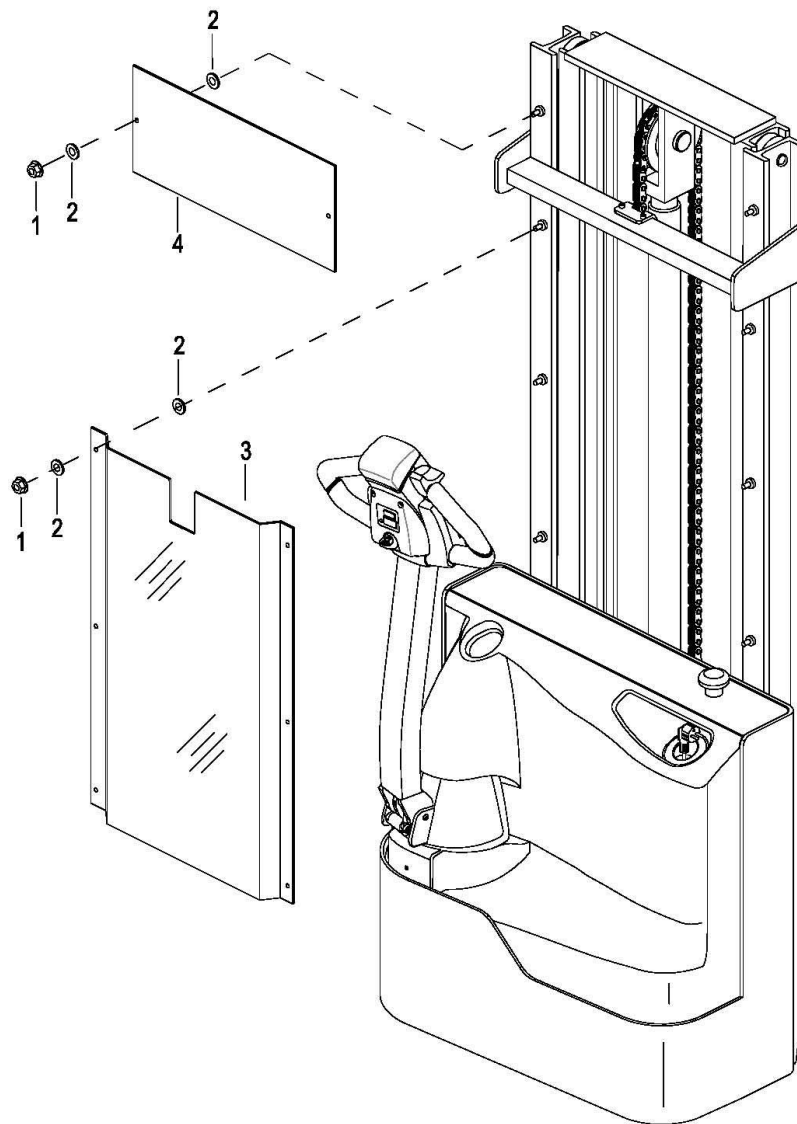
060601 Windshield Assembly

安全挡板总成

Index	Part No.	Part Name		No.	Applied Date	Remark
序号	零件编号	零件名称		数量	适用时间	备注
1	0000-001176-00	Nut M8	螺母	6		
2	2214-150002-00	Washer	垫片	12		
3	2105-110001-00-01	Windshield	安全挡板	1	426120946-426203380	LH: 2500mm, superseded by 2111-110004-0A-06
3	2105-110001-00-02	Windshield	安全挡板	1	426120946-426203380	LH: 2700mm, superseded by 2111-110004-0A-07
3	2105-110001-00-03	Windshield	安全挡板	1	426120946-426203380	LH: 3000mm, superseded by 2111-110004-0A-08
3	2105-110001-00-04	Windshield	安全挡板	1	426120946-426203380	LH: 3300mm, superseded by 2111-110004-0A-09
3	2105-110001-00-05	Windshield	安全挡板	1	426120946-426203380	LH: 3500mm
3	2105-110001-00-06	Windshield	安全挡板	1	426120946-426203380	LH: 3600mm, superseded by 2111-110004-0A-10

060602 Windshield Assembly

安全挡板总成



060602 Windshield Assembly

安全挡板总成

Index	Part No.	Part Name		No.	Applied Date	Remark
序号	零件编号	零件名称		数量	适用时间	备注
1	0000-001176-00	Nut M8	螺母	8		
2	2214-150002-00	Washer	垫片	16		
3	2111-110004-0A-06	Windshield	安全挡板	1	426203381-	Lifting Height =2500mm, EP20180901-01
3	2111-110004-0A-07	Windshield	安全挡板	1	426203381-	Lifting Height =2700mm, EP20180901-01
3	2111-110004-0A-08	Windshield	安全挡板	1	426203381-	Lifting Height =3000mm, EP20180901-01
3	2111-110004-0A-09	Windshield	安全挡板	1	426203381-	Lifting Height =3300mm, EP20180901-01
3	2111-110004-0A-10	Windshield	安全挡板	1	426203381-	Lifting Height =3600mm, EP20180901-01
3	2111-110004-0A-35	Windshield	安全挡板	1	426203381-	Lifting Height =3500mm, EP20180901-01
4	2105-110011-00	Windshield	安全挡板	1	4311208239-	BGD-21-010278,For overseas